



*'The Council and Staff of the Shire of Boddington, in partnership with the community,
are committed to operating effectively and efficiently to provide quality lifestyle
opportunities
that encourage population growth and development'*

MINUTES

For The
Ordinary Meeting of Council
Held At

5PM, TUESDAY 21 FEBRUARY 2017

Council Chambers
39 Bannister Rd, Boddington

DISCLAIMER

No responsibility whatsoever is implied or accepted by the Shire of Boddington for any act, omission or statement or intimation occurring during Council/Committee meetings or during formal/informal conversations with staff. The Shire of Boddington disclaims any liability for any loss whatsoever and howsoever caused arising out of reliance by any person or legal entity on any such act, omission or statement or intimation occurring during Council/Committee meetings or discussions. Any person or legal entity who acts or fails to act in reliance upon any statement does so at that person's or legal entity's own risk.

In particular, and with derogating in any way from the broad disclaimer above, in any discussion regarding any planning application or application for a licence, any statement or limitation of approval made by a member or officer of the Shire of Boddington during the course of any meeting is not intended to be and is not taken as notice or approval from the Shire of Boddington. The Shire of Boddington warns that anyone who has an application lodged with the Shire of Boddington must obtain and only should rely on WRITTEN CONFIRMATION of the outcome of that application and any conditions attaching to the decision made by the Shire of Boddington in respect of the application.

Minutes

1.	DECLARATION OF OPENING:	4
2.	ATTENDANCE/APOLOGIES/LEAVE OF ABSENCE:	4
2.1.1	Attendance	4
2.1.2	Apologies	4
2.1.3	Leave of Absence	4
3.	DISCLOSURE OF FINANCIAL INTEREST:	4
4.	PUBLIC QUESTION TIME:	5
4.1	RESPONSE TO PREVIOUS QUESTIONS TAKEN ON NOTICE:	5
4.2	WRITTEN QUESTIONS PROVIDED IN ADVANCE:	5
4.3	PUBLIC QUESTIONS FROM THE GALLERY:	5
5.	PETITIONS/DEPUTATIONS/PRESENTATIONS/ SUBMISSIONS:	5
6.	CONFIRMATION OF MINUTES:	6
6.1.1	Ordinary Meeting of Council held on Tuesday 17 January 2017	6
6.1.2	Special Meeting of Council held on Tuesday 7 February 2017	6
7.	ANNOUNCEMENTS BY PRESIDING MEMBER WITHOUT DISCUSSION:	6
8.	REPORTS OF OFFICERS AND COMMITTEES:	7
8.1	PLANNING CONSULTANT:	7
8.2	MANAGER FINANCIAL SERVICES:	7
8.2.1	Monthly Financial Statements – January 2017	7
8.2.2	List of Payments- January 2017	20
8.2.3	Rates Interest Write-off for 5 properties	28
8.2.4	Debt Collection Fee Write-off for A1359	29
8.3	PRINCIPAL ENVIRONMENTAL HEALTH OFFICER/ BUILDING SURVEYOR:	31
8.4	MANAGER WORKS & SERVICES:	31
8.5	DIRECTOR CORPORATE & COMMUNITY SERVICES:	32
8.5.1	Fire Access Track Exemptions	32
8.5.2	Assisting Local Sportsmen and Women – Mahlon Reid	36
8.5.3	WA Country Health Service Contribution Agreement	40
8.6	CHIEF EXECUTIVE OFFICER:	54
8.6.1	Action Sheet	54
8.6.2	Change to Council Meeting Schedule	55
8.6.3	Development Assessment Panel Nominations	57
9.	ELECTED MEMBERS' MOTION OF WHICH PREVIOUS MOTION HAS BEEN GIVEN:	59
9.1	Notice of Motion	59
10.	URGENT BUSINESS WITHOUT NOTICE WITH THE APPROVAL OF THE PRESIDENT OR MEETING:	60
11.	CONFIDENTIAL ITEMS:	60
11.1.1	Boddington Age Appropriate Accommodation– Tender RFT 03/2016-17	60
11.1.2	Purchase of Land	60
12.	CLOSURE OF MEETING:	60

1. DECLARATION OF OPENING:

Cr Allert declared meeting open at 5:00pm.

2. ATTENDANCE/APOLOGIES/LEAVE OF ABSENCE:

2.1.1 Attendance

Cr J. Allert	Shire President
Cr N Crilly	
Cr E Hoek	
Cr T Collins	
Cr D Smart	
Cr M Glynn	

Mr C Littlemore	Chief Executive Officer
Mr G Bartle	Director of Corporate & Community Services
Mr J Rendell	Manager Financial Services
Mr S Weedon	Integrated Planning & Reporting Officer
Ms T Hodder	Executive Assistant

5 Members of the Public attended the meeting.

2.1.2 Apologies

Cr S Manez

2.1.3 Leave of Absence

Nil

3. DISCLOSURE OF FINANCIAL INTEREST:

Cr Collins declared a Financial Interest in Item 8.5.1 in that she is a Real Estate Agent.
Cr Collins declared a Financial Interest in Item 11.1.2 in that she is a Real Estate Agent.

4. PUBLIC QUESTION TIME:

4.1 RESPONSE TO PREVIOUS QUESTIONS TAKEN ON NOTICE:

Nil.

4.2 WRITTEN QUESTIONS PROVIDED IN ADVANCE:

Nil.

4.3 PUBLIC QUESTIONS FROM THE GALLERY:

Mrs James:

Asked if the library lease had been looked at.

Chris Littlemore, CEO responded that nothing had been done yet.

Mrs James:

Which councillors inspected the house 25 Johnstone St.

Cr Allert, Cr Hoek & Cr Smart all confirmed viewing.

Cr Beaton:

Asked Cr Hoek if she could please confirm she received gifts from South 32 for new fence line 12.5K and spraying but did not declare goods or value until 8 Feb 2017.

Cr Hoek: confirmed that was correct.

Cr Beaton:

Asked Cr Hoek if her daughter had received work of a similar nature from South 32.

Cr Hoek said that she did not believe it was her place to answer that question. Cr Allert agreed.

5. PETITIONS/DEPUTATIONS/PRESENTATIONS/
SUBMISSIONS:

Nil.

6. CONFIRMATION OF MINUTES:

6.1.1 Ordinary Meeting of Council held on Tuesday 17 January 2017

COUNCIL RESOLUTION 17/17 Moved Cr Collins

That the minutes of the Ordinary Meeting of Council held on Tuesday 17 January 2017 be confirmed as a true record of proceedings.

Seconded: Cr Glynn Carried 6/0

6.1.2 Special Meeting of Council held on Tuesday 7 February 2017

COUNCIL RESOLUTION /17 Moved Cr Collins

That the minutes of the Special Meeting of Council held on Tuesday 7 February 2017 be confirmed as a true record of proceedings.

Seconded: Cr Glynn Carried:

COUNCIL RESOLUTION 18/17 Moved Cr Hoek

That:

The Item Lay on table for correction.

Seconded: Cr Collins Carried: 6/0

7. ANNOUNCEMENTS BY PRESIDING MEMBER WITHOUT DISCUSSION:

Nil.

8. REPORTS OF OFFICERS AND COMMITTEES:

8.1 PLANNING CONSULTANT:

Nil.

8.2 MANAGER FINANCIAL SERVICES:

8.2.1 Monthly Financial Statements – January 2017

Disclosure of Interest: Nil
Date: 15 February 2017
Author: J Rendell – Manager Financial Services
Attachments: 8.2.1A Financial Statements – January 2017

Summary

Council is to consider Monthly Financial Reports for January 2017

Background

In accordance with Local Government (Financial Management) Regulations 1996 Council is to adopt Monthly Financial Report including the Operating Statement, Statement of Financial Position at the end of each month. Council has also wishes to consider a summary of financial reconciliations on a monthly basis.

Councillors have the opportunity to query financials before the meeting to satisfy themselves before the item comes before Council.

Comment

The Operating Statement, Statement of Financial Position, Statement of Cash flow, Statement of Financial Activity and Summary of Reconciliations are submitted for the month of January 2017.

Statutory Environment - Local Government (Financial Management) Regulations 1996

FINANCIAL SUMMARY YEAR TO DATE JANUARY 2017

The following is provided to assist in the understanding of Councils financial position. It is emphasised that the comparatives and comments are relative to the revised budget. The Shire of Boddington's financial position for year ended 30th June 2016 as finalised and signed off by audit has been incorporated into the reports to provide comparatives and assist in reconciliations where relevant.

OPERATING RESULT

REVENUE

Revenue is 5.1% or \$276k unfavourable to budget. Within the main items the following is noted: -

- **Operating Grants** is 40% or \$158k unfavourable to budget, primarily due to a repayment back to Argyl Water in respect of a proposed development in Ranford, of which the money was

Minutes of the Ordinary Meeting of the Shire of Boddington to be held on
Tuesday 21 February 2017

received in prior years. This will ultimately be funded out of restricted reserves and will be dealt with in the next budget review to be undertaken in March/April 2017.

- **Fees & Charges** is 5.7% or \$41k unfavourable to budget.
- **Interest Earnings** is 23.4% or \$21k unfavourable to budget.
- **Other Revenue** is 23.8% or \$30k unfavourable to budget.
- **Profit from Asset sales** it is noted that there is not expected to be any profit from asset sales.

EXPENDITURE

Expenditure is 6.1% or \$237k favourable to budget. Within the main items the following is noted: -

- **Employee costs** are 9.3% or \$134k favourable to budget.
- **Materials and contracts** are collectively 11.2% or \$109k favourable to budget, it is too early in the year and the variance is considered as only timing.
- **Utility charges** are 11.4% or \$20k favourable to budget.
- **Depreciation** is 0.1% or \$1k favourable to budget.
- **Insurance expenses** is 6.6% or \$14k favourable to budget.
- **Other expenditure** is 31.5% or \$21k unfavourable to budget.

NET RESULT

The net result shows a 2.2% or \$39k unfavourable result to budget, due to total revenue being \$276k unfavourable and expenditure being \$237k favourable to budget.

CAPITAL ITEMS

Capital revenue is 32% or \$671k unfavourable to budget, this is considered as a timing difference at this stage, amounts received or brought to account thus far: -

- \$125k in respect of Bushfire ESL capital contribution
- \$300k for the Independent Care Living Grant
- \$469k for the Recreation Centre Grant
- \$194k for Regional Roads Group
- \$32k for Swimming Pool Capital Grant

Capital expenditure is 22.3% or \$1.175M favourable to budget. For a more detailed understanding refer to the Capital Expenditure by Asset Class report.

FUNDING ITEMS

Repayment of loan principal is in line with budget.

RESERVE ITEMS

Reserve movement is 4.1% favourable to budget and is as a result of under expenditure in respect of capital expenditure for land and buildings. This will form a significant part of the restricted funds at year end and has been addressed in the budget review.

CASH & INVESTMENTS

Cash and investments sits at \$6.7M, this represents a decrease of \$0.5M from the previous month, mainly due to revenue being lower, capital and operating expenses being higher. It is emphasised however that the majority of funds is tagged as "restricted" and therefore cannot form part of Council's unrestricted or free cash.

SUMMARY

The financial result 17.6% or \$556k better than budget.

OFFICER'S RECOMMENDATION – 8.2.1

COUNCIL RESOLUTION

19/17

Moved: Cr Smart

That Council adopt the:

1. monthly financial statements for the period ending 31 January 2017; and
2. summary of reconciliations for the period ending 31 January 2017.

Seconded:

Cr Collins

Carried: 6/0

Attachment 8.2.1 A

SHIRE OF BODDINGTON

Financial Reports for the period ended

31-Jan-17

Report Type	Page No.
Summary of Financial Activity	1
Comprehensive Income Statement by Nature/type	2
Comprehensive Income Statement by Programme	3
Rate Setting Statement	4
Statement of Financial Position	5
Loan Repayments & Net Current Asset Position	6
Capital Expenditure by Asset type	7
Existing Buildings Capital Expenditure by Jobs	8
Financial Graphs	9

Attachment 8.2.1 A

SHIRE OF BODDINGTON SUMMARY OF FINANCIAL ACTIVITY by Nature or Type For the period ended							31-Jan-17
	2016/17 Budget Approved	Current	YTD	Actual YTD	Variance YTD	% Variance YTD	
Opening Funding Surplus (Deficit)	-	166,976	166,976	166,976	-		
Revenue							
Rates	4,106,113	4,107,173	4,106,729	4,082,071	- 24,658	-0.6%	
Operating Grants, Subsidies and Contributions	736,081	628,861	398,783	240,084	- 158,699	-39.8%	
Fees and Charges	1,050,142	1,038,971	729,074	687,810	- 41,264	-5.7%	
Interest Earnings	131,797	156,797	91,455	70,076	- 21,379	-23.4%	
Other Revenue	173,487	210,290	126,101	96,108	- 29,993	-23.8%	
Profit from Asset Sales	-	-	-	-	-		
OPERATING INCOME	6,197,620	6,142,092	5,452,142	5,176,149	- 275,993	-5.1%	
Expenses							
Employee Costs	- 2,518,897	- 2,518,897	- 1,448,871	- 1,314,416	134,455	9.3%	
Materials and Contracts	- 1,532,337	- 1,722,068	- 974,691	- 865,845	108,846	11.2%	
Utility Charges	- 313,669	- 297,083	- 173,680	- 153,830	19,850	11.4%	
Depreciation on Non-Current Assets	- 1,378,259	- 1,563,291	- 911,834	- 910,742	1,092	0.1%	
Interest Expenses	- 121,119	- 121,119	- 63,518	- 83,886	- 20,368	-32.1%	
Insurance Expenses	- 208,943	- 209,933	- 209,916	- 196,068	13,848	6.6%	
Loss on Asset Sales	-	-	-	-	-		
Other Expenditure	- 150,315	- 140,849	- 66,936	- 88,024	- 21,088	-31.5%	
OPERATING EXPENDITURE	- 6,223,539	- 6,573,241	- 3,849,446	- 3,612,810	236,636	6.1%	
Net Result (incl. c/f surplus position)	- 25,919	- 264,174	1,769,672	1,730,314	- 39,357	-2.2%	
Adjustments for Non-Cash Items							
Depreciation	1,378,259	1,563,291	911,834	910,742	- 1,092	-0.1%	
Loss on Asset Disposals	-	-	-	-	-		
(Profit) on Asset Disposals	-	-	-	-	-		
Provisions and Accruals	-	-	-	-	-		
	1,378,259	1,563,291	911,834	910,742	- 1,092	-0.1%	
Net Result before funding and Capex items	1,352,340	1,299,117	2,681,506	2,641,057	- 40,449	-1.5%	
Capital Income and Expenditure							
Non-operating Grants & contributions	762,767	3,556,217	2,093,476	1,422,730	- 670,747	32.0%	
Purchase Land & Buildings	- 404,641	- 6,632,176	- 3,828,473	- 3,504,429	324,044	8.5%	
Purchase Plant & Equipment	- 322,344	- 840,844	- 804,999	- 214,340	590,659	73.4%	
Purchase Roads, Streets & Bridges	- 1,029,551	- 974,001	- 534,594	- 333,247	201,347	37.7%	
Purchase Other Infrastructure	- 156,569	- 156,569	- 91,329	- 32,275	59,054	64.7%	
Proceeds from Asset Sales	384,000	334,000	300,000	250,000	- 50,000	16.7%	
Net Capital Items	- 766,338	- 4,713,373	- 2,865,919	- 2,411,562	454,357	15.9%	
Funding Items							
Proceeds from New loans	-	-	-	-	-		
Repayment of Loan Principal	- 301,130	- 301,130	- 175,659	- 179,586	- 3,927	-2.2%	
Self Supporting Loan Principal Income	-	-	-	-	-		
Total Funding Items	- 301,130	- 301,130	- 175,659	- 179,586	- 3,927	-2.2%	
Reserve Items							
Transfers to Reserves	- 56,560	- 84,385	-	-	-		
Transfers from Reserves	-	4,159,483	3,523,590	3,669,457	145,867	-4.1%	
Net Reserve movement	- 56,560	4,075,098	3,523,590	3,669,457	145,867	-4.1%	
Closing Funding Surplus (Deficit)	228,312	359,712	3,163,517	3,719,366	555,849	17.6%	

Attachment 8.2.1 A

SHIRE OF BODDINGTON							
STATEMENT OF COMPREHENSIVE INCOME BY NATURE/TYPE							
For the period ended							
	2016/17 Budget			Actual	Variance	% Variance	
	Approved	Current	YTD	YTD	YTD	YTD	
Revenue							
Rates	4,106,113	4,107,173	4,106,729	4,082,071	-	24,658	-0.6%
Operating Grants, Subsidies and Contributions	736,081	628,861	398,783	240,084	-	158,699	-39.8%
Fees and Charges	1,050,142	1,038,971	729,074	687,810	-	41,264	-5.7%
Interest Earnings	131,797	156,797	91,455	70,076	-	21,379	-23.4%
Other Revenue	173,487	210,290	126,101	96,108	-	29,993	-23.8%
OPERATING INCOME	6,197,620	6,142,092	5,452,142	5,176,149	-	275,993	-5.1%
Expenses							
Employee Costs	-	2,518,897	-	1,314,416	-	134,455	9.3%
Materials and Contracts	-	1,532,337	-	974,691	-	108,846	11.2%
Utility Charges	-	313,669	-	173,680	-	19,850	11.4%
Depreciation on Non-Current Assets	-	1,378,259	-	911,834	-	1,092	0.1%
Interest Expenses	-	121,119	-	83,886	-	20,368	-32.1%
Insurance Expenses	-	208,943	-	209,916	-	13,848	6.6%
Other Expenditure	-	150,315	-	88,024	-	21,088	-31.5%
OPERATING EXPENDITURE	-	6,223,539	-	3,612,810	-	236,636	6.1%
Net Result before Capital Income	-	25,919	-	1,563,338	-	39,357	-2.5%
Non-Op. Grants, Subsidies and Contributions	762,767	3,556,217	2,093,476	1,422,730	-	670,747	-32.0%
Profit on Asset Disposals	-	-	-	-	-	-	-
Loss on Asset Disposals	-	-	-	-	-	-	-
OTHER	762,767	3,556,217	2,093,476	1,422,730	-	670,747	-32.0%
NET RESULT	736,848	3,125,067	3,696,172	2,986,068	-	710,104	-19.2%
Other Comprehensive Income							
Changes on Revaluation of Non-Current Assets	-	64,500	-	89,468	-	25,032	-
Total Other Comprehensive Income	-	64,500	-	89,468	-	25,032	-
TOTAL COMPREHENSIVE INCOME	672,348	3,010,567	3,581,672	2,896,600	-	685,072	-19.1%

Attachment 8.2.1 A

SHIRE OF BODDINGTON STATEMENT OF COMPREHENSIVE INCOME BY PROGRAM For the period ended

31-Jan-17

	2016/17 Budget			Actual	Variance	% Variance
	Approved	Current	YTD	YTD	YTD	YTD
Revenue						
Governance	4,554,904	4,593,663	4,366,554	4,320,201	46,353	-1.1%
General Purpose Funding	71,905	89,329	55,597	54,620	977	-1.8%
Law, Order, Public Safety	291,921	200,829	147,890	142,217	5,673	-3.8%
Health	29,770	29,770	17,353	10,263	7,090	-40.9%
Education and Welfare	410,949	385,420	226,928	251,482	24,554	10.8%
Housing	20,073	20,073	11,697	14,017	2,320	19.8%
Community Amenities	286,608	289,868	261,205	256,001	5,204	-2.0%
Recreation and Culture	79,548	104,548	79,279	56,304	22,975	-29.0%
Transport	103,961	77,911	77,775	68,100	9,675	-12.4%
Economic Services	268,758	271,458	161,657	19,571	181,228	-112.1%
Other Property and Services	79,225	79,225	46,207	22,516	23,691	-51.3%
	6,197,620	6,142,092	5,452,142	5,176,149	275,993	-5.1%
Expenses excluding Finance Costs						
Governance	40,376	42,741	19,365	25,656	6,291	-32.5%
General Purpose Funding	- 2,638	- 25,390	- 14,805	- 14,829	24	-0.2%
Law, Order, Public Safety	- 515,359	- 565,990	- 335,605	- 366,346	30,741	-9.2%
Health	- 232,341	- 270,494	- 159,826	- 157,572	2,254	1.4%
Education and Welfare	- 625,589	- 609,558	- 355,618	- 306,312	49,306	13.9%
Housing	- 35,388	- 28,789	- 14,242	- 23,843	9,601	-67.4%
Community Amenities	- 688,702	- 683,905	- 398,806	- 384,592	14,214	3.6%
Recreation and Culture	- 1,190,077	- 1,394,993	- 824,711	- 769,686	55,025	6.7%
Transport	- 2,520,350	- 2,394,756	- 1,387,182	- 1,407,481	20,299	-1.5%
Economic Services	- 425,782	- 558,077	- 319,995	- 283,766	36,229	11.3%
Other Property and Services	- 22,656	- 20,488	- 22,987	- 112,160	135,147	587.9%
	- 6,102,420	- 6,452,122	- 3,785,928	- 3,528,925	257,003	6.8%
Finance Costs						
Governance	- 40,510	- 40,510	- 20,254	- 27,883	7,629	
General Purpose Funding	-	-	-	-	-	
Law, Order, Public Safety	-	-	-	-	-	
Health	-	-	-	-	-	
Education and Welfare	- 11,067	- 11,067	- 5,533	- 6,822	1,289	-23.3%
Housing	- 35,389	- 35,389	- 19,800	- 23,843	4,043	-20.4%
Community Amenities	-	-	-	-	-	
Recreation and Culture	- 33,106	- 33,106	- 17,407	- 24,226	6,819	-39.2%
Transport	- 1,048	- 1,048	- 524	- 1,112	588	-112.2%
Economic Services	-	-	-	-	-	
Other Property and Services	-	-	-	-	-	
	- 121,119	- 121,119	- 63,518	- 83,886	20,368	-32.1%
Net Result before Capital Income	- 25,919	431,150	1,602,696	1,563,338	1,378	
Non Operating Grants, Subsidies and Contributions						
Law, Order, Public Safety	-	518,500	518,500	125,000	393,500	
Education and Welfare	-	1,670,500	835,250	300,000	535,250	
Recreation and Culture	30,000	640,000	335,000	500,748	165,748	
Transport	732,767	677,217	404,726	496,982	92,256	22.8%
Economic Services	-	50,000	-	-	-	
Other Property and Services	-	-	-	-	-	
	762,767	3,556,217	2,093,476	1,422,730	670,747	-32.0%
Other Comprehensive Income						
Changes on Revaluation of Non-Current Assets	- 64,500	- 114,500	- 114,500	- 89,468	25,032	21.9%
TOTAL COMPREHENSIVE INCOME	672,348	3,010,567	3,581,672	2,896,600	685,072	-19.1%

Attachment 8.2.1 A

SHIRE OF BODDINGTON RATE SETTING STATEMENT For the period ended							31-Jan-17
	2016/17 Budget Approved	Current	YTD	Actual YTD	Variance YTD	% Variance YTD	
Revenue							
Operating Grants, Subsidies and Contributions	736,081	628,861	398,783	240,084 -	158,699	-39.8%	
Fees and Charges	1,050,142	1,038,971	729,074	687,810 -	41,264	-5.7%	
Interest Earnings	131,797	156,797	91,455	70,076 -	21,379	-23.4%	
Other Revenue	173,487	210,290	126,101	96,108 -	29,993	-23.8%	
Profit from Asset Sales	-	-	-	-	-		
Total Operating Revenue excluding Rates	2,091,507	2,034,919	1,345,413	1,094,079 -	251,334	-18.7%	
Expenses							
Employee Costs	- 2,518,897 -	- 2,518,897 -	- 1,448,871 -	- 1,314,416	134,455	9.3%	
Materials and Contracts	- 1,532,337 -	- 1,722,068 -	- 974,691 -	- 865,845	108,846	11.2%	
Utility Charges	- 313,669 -	- 297,083 -	- 173,680 -	- 153,830	19,850	11.4%	
Depreciation on Non-Current Assets	- 1,378,259 -	- 1,563,291 -	- 911,834 -	- 910,742	1,092	0.1%	
Interest Expenses	- 121,119 -	- 121,119 -	- 63,518 -	- 83,886 -	20,368	-32.1%	
Insurance Expenses	- 208,943 -	- 209,933 -	- 209,916 -	- 196,068	13,848	6.6%	
Loss on Asset Sales	-	-	-	-	-		
Other Expenditure	- 150,315 -	- 140,849 -	- 66,936 -	- 88,024 -	21,088	-31.5%	
Operating Expenditure	- 6,223,539 -	- 6,573,241 -	- 3,849,446 -	- 3,612,810	236,636	6.1%	
Operating Result Excluding Rates Income	- 4,132,032 -	- 4,538,323 -	- 2,504,033 -	- 2,518,731 -	14,699	-1%	
Adjustments for Non-Cash Items							
Depreciation	1,378,259	1,563,291	911,834	910,742 -	1,092	0.1%	
(Profit)/Loss on Asset Disposals	-	-	-	-	-		
Provisions & Accruals	-	-	-	-	-		
	1,378,259	1,563,291	911,834	910,742 -	1,092	0.1%	
Capital Income and Expenditure							
Purchase of Capital Expenditure	- 1,913,105 -	- 8,603,590 -	- 5,259,395 -	- 4,084,291	1,175,104	22.3%	
Non-operating Grants & contributions	762,767	3,556,217	2,093,476	1,422,730 -	670,747	32.0%	
Proceeds from Asset Sales	384,000	334,000	300,000	250,000 -	50,000	16.7%	
	- 766,338 -	- 4,713,373 -	- 2,865,919 -	- 2,411,562	454,357	15.9%	
Funding & Reserve Items							
Proceeds from New loans	-	-	-	-	-		
Repayment of Loan Principal	- 301,130 -	- 301,130 -	- 175,659 -	- 179,587 -	3,928	-2.2%	
Self Supporting Loan Principal Income	-	-	-	-	-		
Transfers to Reserves	- 56,560 -	84,385	-	-	-		
Transfers from Reserves	-	4,159,483	3,523,590	3,669,457	145,867	-4.1%	
	- 357,690	3,773,968	3,347,931	3,489,870	141,939	-4.2%	
Estimated Surplus/(Deficit) July 1 B/Fd.	-	166,976	166,976	166,976	-		
Estimated Surplus/(Deficit) June 30 C/Fd.	228,312	359,712	3,163,517	3,719,366 -	555,849	17.6%	
Amount required from General Rate	- 4,106,113 -	- 4,107,172 -	- 4,106,729 -	- 4,082,071 -	24,658	-0.6%	

Attachment 8.2.1 A

SHIRE OF BODDINGTON STATEMENT OF FINANCIAL POSITION For the period ended		
	30-Jun-16 Prior Year	31-Jan-17 YTD Actual
CURRENT ASSETS		
Cash and Cash Equivalents	7,423,388	6,751,165
Equity Reserve Investments	-	-
Trade & Other Receivables	309,629	722,961
Inventories	2,044	2,044
TOTAL CURRENT ASSETS	7,735,061	7,476,171
NON CURRENT ASSETS		
Property Plant & Equipment	21,291,196	24,412,719
Land Held for Resale	272,539	272,539
Infrastructure	46,191,095	45,903,652
TOTAL NON CURRENT ASSETS	67,754,830	70,588,910
TOTAL ASSETS	75,489,891	78,065,081
CURRENT LIABILITIES		
Trade & Other Payables	259,841	127,935
Employee Provisions	314,224	292,740
Borrowings	301,130	121,544
Trusts	193,867	205,434
TOTAL CURRENT LIABILITIES	1,069,062	747,653
NON CURRENT LIABILITIES		
Trade & Other Payables - Specific	300,000	300,000
Borrowings	2,505,439	2,505,439
Employee Provisions	62,352	62,352
TOTAL NON CURRENT LIABILITIES	2,867,791	2,867,790
TOTAL LIABILITIES	3,936,853	3,615,444
EQUITY		
Retained Earnings	24,466,178	31,121,703
Reserves Cash Backed	6,800,153	3,130,696
Revaluation Reserve	40,286,707	40,197,238
TOTAL EQUITY	71,553,038	74,449,637
TOTAL LIABILITIES & EQUITY	75,489,891	78,065,081

Attachment 8.2.1 A

LOAN PRINCIPAL REPAYMENTS							
COA	Description	IE Summary	Inc/Exp Analysis Summary	Original Budget	Current Budget	YTD Budget	YTD Actual
3042460	PRINCIPAL ON LOAN 105	71	Other Expenses	\$112,455.50	\$112,455.50	\$65,599.04	\$55,669.89
2113200	LOAN 106 - REC CENTRE	71	Other Expenses	\$0.00	\$0.00	\$0.00	\$0.00
3074200	PRINCIPAL LOAN 83	71	Other Expenses	\$9,367.50	\$9,367.50	\$5,464.38	\$9,367.78
3083000	PRINCIPAL ON LOAN 100	71	Other Expenses	\$12,997.00	\$12,997.00	\$7,581.58	\$6,395.84
3091402	PRINCIPAL ON LOAN 91	71	Other Expenses	\$0.00	\$0.00	\$0.00	\$0.00
3091460	PRINCIPAL ON LOAN 94	71	Other Expenses	\$11,107.00	\$11,107.00	\$6,479.08	\$5,465.35
3091470	PRINCIPAL ON LOAN 97	71	Other Expenses	\$11,264.00	\$11,264.00	\$6,570.67	\$5,542.62
3113046	PRINCIPAL - LOAN 103	71	Other Expenses	\$51,216.00	\$51,216.00	\$29,876.00	\$51,215.79
3113048	PRINCIPAL - LOAN 106 REC CENTRE	71	Other Expenses	\$54,025.00	\$54,025.00	\$31,514.58	\$26,787.27
3121100	PRINCIPAL LOAN 102	71	Other Expenses	\$38,698.00	\$38,698.00	\$22,573.83	\$19,141.82
TOTAL				\$301,130.00	\$301,130.00	\$175,659.17	\$179,586.36

NET CURRENT ASSET POSITION - RECONCILIATION				
	2016/17 Budget			Actual
	Approved	Current	YTD	YTD
NCA items from Statement of Financial Activity				
Current Assets	3,156,683	3,368,767	-	258,448
Less: Current Liabilities	- 819,828	- 585,130		141,380
Add: Restricted Assets/Principal Repayment	- 2,108,543	- 2,423,925		3,669,457
Net Current Assets	228,312	359,712		3,552,390
REPRESENTED BY - (From Financial Position) Movement				
Net Current Assets	228,312	359,712		3,552,390
REPRESENTED BY - (From Rate Setting Statement) Movement				
Opening Surplus Position	-	166,976		166,976
Closing Surplus Position	228,312	359,712		3,719,366
Net Current Assets	228,312	192,736		3,552,390

Attachment 8.2.1 A

SHIRE OF BODDINGTON
Printed : at 10:10 AM on 6/02/2017

SHIRE OF BODDINGTON CAPITAL EXPENDITURE BY ASSET CLASS For the period ended						
						31-Jan-17
COA	Description	Asset Type	Original Budget	Current Budget	YTD Budget	YTD Actual
3042202	EXISTING BUILDINGS 16/17	Land & Buildings	104,641	91,651	53,473	43,848
3082090	AGED CARE COMPLEX	Land & Buildings	-	1,670,500	400,000	58,983
3113200	RECREATION CENTRE	Land & Buildings	-	4,358,039	3,200,000	3,293,392
3135202	LAND PURCHASE	Land & Buildings	300,000	300,000	-	-
3132008	VISITOR CENTRE	Land & Buildings	-	211,986	175,000	108,206
		Land & Buildings Total	404,641	6,632,176	3,828,473	3,504,429
3102201	NEW REFUSE SITE	Other Infrastructure	31,000	31,000	18,081	14,319
3105050	OVALS PARKS & CEMETERIES	Other Infrastructure	83,713	83,713	48,832	2,957
3112213	SWIMMING POOL - INFRASTRUCTURE	Other Infrastructure	-	-	-	15,000
3053025	INFRASTRUCTURE OTHER	Other Infrastructure	41,856	41,856	24,416	-
		Other Infrastructure Total	156,569	156,569	91,329	32,275
3042209	COMPUTER EQUIPMENT	Plant & Equip	62,785	62,785	62,785	40,430
3042208	OFFICE EQUIPMENT	Plant & Equip	20,928	20,928	20,928	-
3051220	Fire Tender Boddington	Plant & Equip	-	518,500	518,500	125,000
3123466	PNEUMATIC TYRED ROLLER	Plant & Equip	162,237	162,237	162,237	-
3127025	WATER TANKS - PLANT & EQUIPMENT	Plant & Equip	7,773	7,773	7,773	29,010
3121066	TORO RIDE ON MOWER	Plant & Equip	28,621	28,621	9,445	19,900
3139302	MINOR CAPITAL ITEMS	Plant & Equip	40,000	40,000	23,331	-
		Plant & Equip Total	322,344	840,844	804,999	214,340
3121086	Main Roads Bridge Program	Roads Infrastructure	42,500	42,500	-	18,000
3121090	ROADS TO RECOVERY	Roads Infrastructure	302,582	302,582	-	36,640
3121705	MAIN STREET UPGRADE	Roads Infrastructure	132,563	132,563	66,282	-
3121700	COMMODITY GRANT CAPITAL EXPENSE	Roads Infrastructure	55,550	-	-	-
3121800	ROAD CONST. - RRG	Roads Infrastructure	454,500	454,500	454,500	278,607
3121803	FOOTPATHS	Roads Infrastructure	41,856	41,856	13,812	-
		Roads Infrastructure Total	1,029,551	974,001	534,594	333,247
		Grand Total	1,913,105	8,603,590	5,259,395	4,084,291

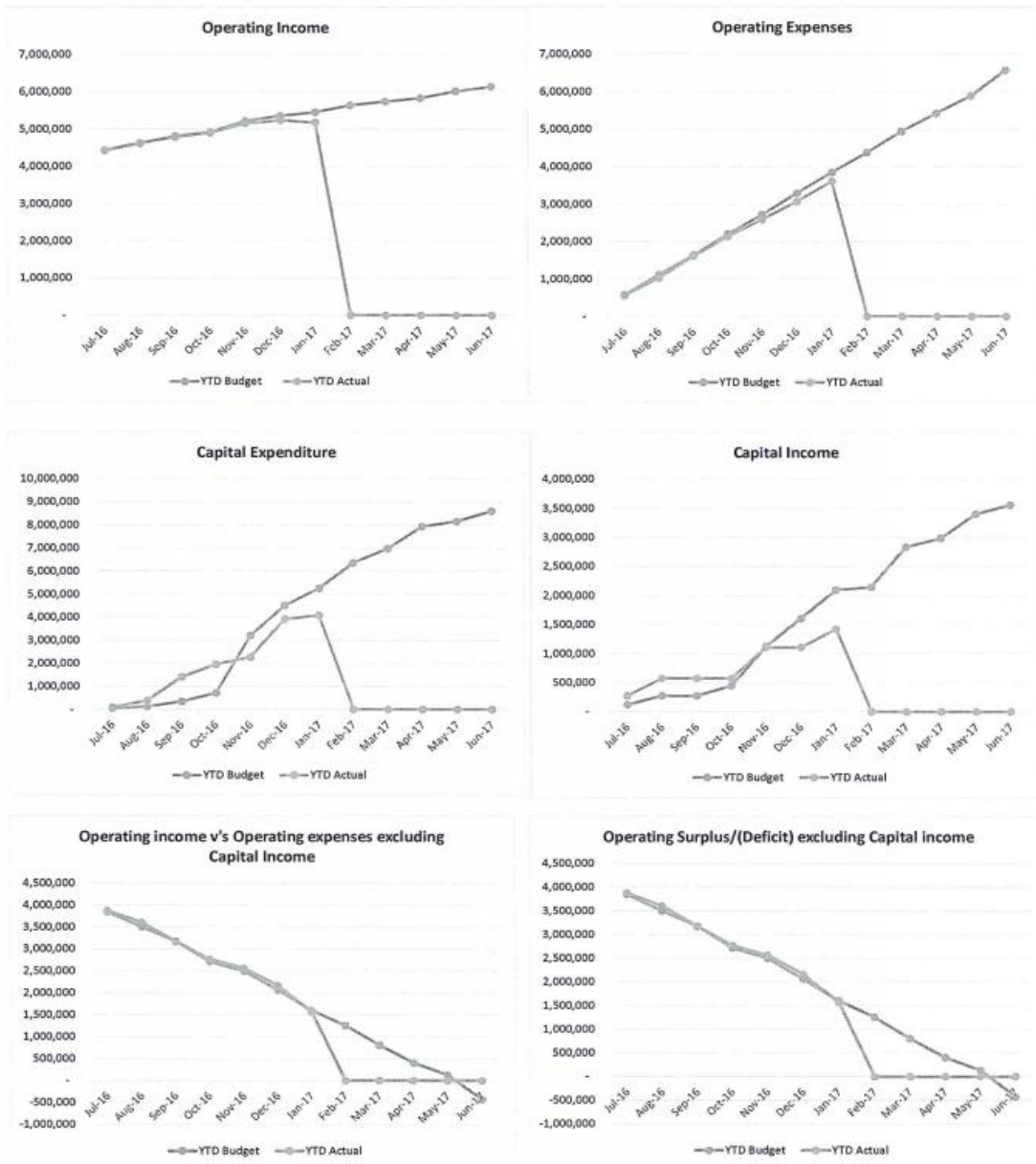
Attachment 8.2.1 A

CAPITAL EXPENDITURE - EXISTING BUILDINGS - By JOBS					31-Jan-17
Job	Description	Original Budget	Current Budget	YTD Budget	YTD Actual
BAC1999	Bannister Road Shire Office - Capital	2,100	2,100	1,225	-
BCC1028	Pollard Street Child Care Centre - Capital	8,700	8,700	5,075	4,700
BCC1029	Johnstone Street Community Newspaper - Capital	4,650	4,650	2,716	-
BCC1999	Bannister Road - Caravan Park Caretaker Residence - Capital	3,900	3,900	2,275	-
BDC1015	Farmer Ave - Depot Lunch Room - Capital	600	600	350	-
BEC1029	Johnstone Street Emergency Services Shed - Capital	-	-	-	173
BFC1039	Wurraming Ave - Foreshore Toilet Block - Capital	2,100	2,100	1,225	-
BIC1024	Hotham Street Ic Unit 1 - Capital	1,331	1,331	777	-
BIC2024	Hotham Street Ic Unit 2 - Capital	1,331	1,331	777	-
BIC3024	Hotham Street Ic Unit 3 - Capital	1,331	1,331	777	-
BIC4024	Hotham Street Ic Unit 4 - Capital	1,332	1,332	777	-
BMC1024	Hotham Street Medical Centre - Capital	1,500	1,500	875	-
BOC1025	Forrest Street Old School - Main Classroom - Capital	1,500	1,500	875	-
BOC4025	Forrest Street Old School Toilets - Capital	16,000	16,000	9,331	-
BPC1999	Bannister Road Public Toilets - Capital	900	900	525	-
BRC1025	Forrest Street Retirement Unit 1 - Capital	225	225	133	-
BRC2025	Forrest Street Retirement Unit 2 - Capital	225	225	133	-
BRC3025	Forrest Street Retirement Unit 3 - Capital	225	225	133	-
BRC4025	Forrest Street Retirement Unit 4 - Capital	225	225	133	-
BSC1027	Hill Street 34 (Staff Housing) - Capital	1,370	1,370	798	-
BSC1028	Pollard Street Swimming Pool Ablutions - Capital	900	900	525	8,645
BSC1029	Johnstone Street 25 (Staff Housing) - Capital	12,990	-	-	-
BSC1045	Pecan Place 3 (Staff Housing) - Capital	900	900	525	4,390
BSC1050	Prussian Way 20 (Staff Housing) - Capital	4,300	4,300	2,506	3,911
BSC1054	Blue Gum Close 15 (Staff Housing) - Capital	3,900	3,900	2,275	3,850
BSC1063	Club Drive Sporting Complex - Capital	1,500	1,500	875	-
BSC2029	Johnstone Street 46 (Staff Housing) - Capital	900	900	525	-
BSC2054	Blue Gum Close 16 (Staff Housing) - Capital	7,300	7,300	4,256	-
BSC3028	Pollard Street Swimming Pool Kiosk/Pump Room - Capital	4,675	4,675	2,730	4,250
BTC1029	Johnstone Street Town Hall - Capital	16,200	16,200	9,450	13,930
BWC1013	Robins Road Waste Site Office - Capital	600	600	350	-
BYC1999	Bannister Road Youth Centre - Capital	931	931	546	-
TOTAL EXISTING BUILDINGS		\$104,641	\$91,651	\$53,473	\$43,848
REPRESENTED BY:					
COA					
3042202 EXISTING BUILDINGS 16/17		104,641	91,651	53,473	43,848

Attachment 8.2.1 A

SHIRE OF BODDINGTON GRAPHICAL DISCLOSURE OF FINANCIAL PERFORMANCE For the period ended

31-Jan-17



6/02/2017S:\Corporate Services\Manager Finance\Financial Reports\Council\2016-17\06 December 2016>Data for Graphs

8.2.2 List of Payments- January 2017

Disclosure of Interest: Nil
Date: 15 February 2017
Author: J Rendell
Attachments: 8.2.2A List of Payments for January 2017

Summary

The Local Government (Financial Management) Regulations 1996 require the preparation of a List of Payments made from the Council's bank accounts.

Background

A list of the payments made in each month is to be prepared and presented to a meeting of Council in the following month.

This list of payments is to be reviewed by Council separately from the monthly financial statements. This will ensure that the requirement of the Financial Regulations for the list of payments made in one month to be presented to the Council meeting in the following month, will be met even if the financial statements are not presented to that meeting.

Councillors have the opportunity to query or inspect invoices before the meeting to satisfy themselves before the item comes before Council.

Comment

The List of Payments for the month of January 2017 is presented in Attachment 8.2.2A.

Statutory Environment

Local Government (Financial Management) Regulations 1996

13. Payments from municipal fund or trust fund by CEO, CEO's duties as to etc.

- (1) If the local government has delegated to the CEO the exercise of its power to make payments from the municipal fund or the trust fund, a list of accounts paid by the CEO is to be prepared each month showing for each account paid since the last such list was prepared –
 - (a) the payee's name; and
 - (b) the amount of the payment; and
 - (c) the date of the payment; and
 - (d) sufficient information to identify the transaction.
- (2) A list of accounts for approval to be paid is to be prepared each month showing –
 - (a) for each account which requires council authorisation in that month –
 - (i) the payee's name; and
 - (ii) the amount of the payment; and
 - (iii) sufficient information to identify the transaction; and
 - (b) the date of the meeting of the council to which the list is to be presented.

- (3) A list prepared under subregulation (1) or (2) is to be —
- (a) presented to the council at the next ordinary meeting of the council after the list is prepared; and
 - (b) recorded in the minutes of that meeting.

Policy Implications - Nil

OFFICER'S RECOMMENDATION – 8.2.2

COUNCIL RESOLUTION

20/17

Moved Cr Glynn

That Council adopts the list of payments for the period ending 31 January 2017; at Attachment 8.2.2A.

Seconded:

Cr Crilly

Carried: 6/0

Attachments 8.2.2 A

LISTING OF ACCOUNTS SUBMITTED FOR PAYMENT - JANUARY 2017

Chq/EFT	Date	Name	Description	Amount
1144	11/01/2017	BUILDING & CONSTRUCTION INDUSTRY TRAINING	BCITF DECEMBER 16	534.99
1145	11/01/2017	SHIRE OF BODDINGTON	BRB DECEMBER 16	23.25
1146	11/01/2017	BUILDERS REGISTRATION BOARD OF WA	BRB DECEMBER 16	480.42
1147	12/01/2017	WILLIAM & MARLENE WALDOCK	REFUND KEY & CLEANING BOND FOR PAVILION HIRE. PAID ON	220.00
1148	12/01/2017	SOUL CAMPING	REFUND KEY & CLEANING BOND FOR PAVILION HIRE RODEO	220.00
			TOTAL TRUST	<u>1,478.66</u>
EFT16922	13/01/2017	R & S LAIDLAW EASRTHMOVING	EXCAVATOR HIRE - HARVEY QUINDANNING RD	3,943.00
EFT16923	13/01/2017	AUSTRALIA POST ACCOUNTS RECEIVABLE	MONTHLY POSTAGE CHARGES ON ACCOUNT	219.77
EFT16924	13/01/2017	AR BASELL P/L MOWING & GARDENING SERVICE	RETIC REPAIRS - BDHS OVAL	885.50
EFT16925	13/01/2017	ALLAN PETER ROBINSON	FREIGHT CHARGES	176.00
EFT16926	13/01/2017	TONI LEANNE COLLINS	COUNCILLOR ALLOWANCES	1,428.75
EFT16927	13/01/2017	BODDINGTON TYRE SERVICE	TYRES - GRADER BT002	9,912.96
EFT16928	13/01/2017	EDGE PLANNING & PROPERTY	TOWN PLANNING SERVICES FEE	1,865.87
EFT16929	13/01/2017	JOHN ROBERT ALLERT	COUNCILLOR ALLOWANCES	4,808.75
EFT16930	13/01/2017	WA VINYL SYSTEMS	BALANCE OF PROCUREMENT FEE - POOL TILING	16,500.00
EFT16931	13/01/2017	PAUL WATSON PATRICK	CALLOUT & BATTERIES - VOLVO LOADER BT003	1,725.90
EFT16932	13/01/2017	NARROGIN CARPETS & CURTAINS	REMOVE FLOORING - VISITOR CENTRE	1,782.00
EFT16933	13/01/2017	ECOMIST SWAN	CLEANING SUPPLIES - POOL	929.50
EFT16934	13/01/2017	BODDINGTON IGA - SHIRE ADMIN ACCOUNT	MONTHLY ACCOUNT - SHIRE	304.16
EFT16935	13/01/2017	COURIER AUSTRALIA TOLL IPEC	COURIER CHARGES	209.51
EFT16936	13/01/2017	PACIFIC BRANDS WORKWEAR GROUP PTY LTD	STAFF UNIFORMS	840.40
EFT16937	13/01/2017	NORMAN DISNEY & YOUNG	PROFESSIONAL SERVICES - INDEPENDENT LIVING UNITS	6,462.50
EFT16938	13/01/2017	NEVILLE JAMES CRILLY	COUNCILLOR ALLOWANCES	1,428.75
EFT16939	13/01/2017	PUBLIC LIBRARIES WA INC	PLWA MEMBERSHIP 2016/17	165.00
EFT16940	13/01/2017	COLAS WA PTY LTD	MICROSURFACING - HOTHAM AVE & CROSSMAN RD	40,304.00
EFT16941	13/01/2017	ARCHIVEWISE (TOTALLY CONFIDENTIAL RECORDS	MONTHLY ARCHIVE STORAGE FEES	147.82
EFT16942	13/01/2017	ADVANCED TRAFFIC MANAGEMENT (WA) PTY LTD	TRAFFIC MANAGEMENT - RANFORD FIRE INCIDENT 351289	12,859.27
EFT16943	13/01/2017	COUNTRY SPARKY SERVICES	LIGHTING - VISITOR CENTRE	5,862.95
EFT16944	13/01/2017	SPYKER TECHNOLOGIES PTY LTD	IT SERVICES	610.50

Attachments 8.2.2 A

LISTING OF ACCOUNTS SUBMITTED FOR PAYMENT - JANUARY 2017

Chq/EFT	Date	Name	Description	Amount
EFT16945	13/01/2017	HOLCIM (AUSTRALIA) PTY LTD	INSERTS - STORMWATER DRAIN POLLARD ST	115.50
EFT16946	13/01/2017	CONTRACT AQUATIC SERVICES	CONTRACT MANAGEMENT FEES	13,332.00
EFT16947	13/01/2017	ANTHONY BLAIR	LIMESTONE BLOCKS - NEW REC CENTRE	5,390.00
EFT16948	13/01/2017	BODDINGTON IGA - ELC ACCOUNT	MONTHLY ACCOUNT - ELC	121.30
EFT16949	13/01/2017	DANIELS HEALTH SERVICES PTY LTD	BIO-CANS	268.88
EFT16950	13/01/2017	WATERLOGIC AUSTRALIA PTY LTD	WATER UNITS RENTAL	352.00
EFT16951	13/01/2017	SIMON'S MARKET CAFE	VARIOUS GROCERIES - ELC	17.94
EFT16952	13/01/2017	KATRINA FAY & NEIL ROSS DYSON	STAFF REIMBURSEMENT - K. DYSON	137.00
EFT16953	13/01/2017	CHRIS LITTLEMORE	STAFF REIMBURSEMENT - C. LITTLEMORE	449.09
EFT16954	13/01/2017	SNALLOW PTY LTD - T/A WALLIS COMPUTER	STRATEGIC IT PLAN	4,235.00
EFT16955	13/01/2017	AMPAC DEBT RECOVERY (WA) PTY LTD	DEBT COLLECTION SERVICE FEES - DEBTORS	844.32
EFT16956	13/01/2017	CLARKEYS CARPENTRY	REPAIRS - YOUTH CENTRE, TOWN HALL & POOL	1,380.50
EFT16957	13/01/2017	EBONY CORRINE DYSON	STAFF REIMBURSEMENT - E. DYSON	33.70
EFT16958	13/01/2017	DAVID & ROBIN SMART	COUNCILLOR ALLOWANCES	1,428.75
EFT16959	13/01/2017	AMD CHARTERED ACCOUNTANTS	REGULATION 17 REVIEW	10,611.82
EFT16960	13/01/2017	DMC CLEANING CORPORATION PTY LTD	COMMERCIAL CLEANING SERVICES	14,685.38
EFT16961	13/01/2017	SHARAN MANEZ	COUNCILLOR ALLOWANCES	1,428.75
EFT16962	13/01/2017	MARTIN SHANE GLYNN	COUNCILLOR ALLOWANCES	1,948.75
EFT16963	13/01/2017	M & V WILLCOCKS FAMILY TRUST PTY LTD T/AS BIMS	GRADER HIRE - HARVEY QUINDANNING RD	8,514.00
EFT16964	13/01/2017	BLUEPRINT ENGAGEMENT AND COMMUNICATION PTY	IRSA PROJECT OFFICER	4,180.00
EFT16965	13/01/2017	BEAVER TRAFFIC MANAGEMENT PTY LTD	TRAFFIC MANAGEMENT - CROSSMAN RD	1,504.70
EFT16966	13/01/2017	HENDERSON PHOTOGRAPHICS	IRSA RELAUNCH PHOTOGRAPHY	607.50
EFT16967	13/01/2017	GERARD LIGHTING PTY LTD	GLOBES - MEDICAL CENTRE	260.26
EFT16968	13/01/2017	ARGIL PTY LTD	REFUND - RANFORD WATER EXTENSION DEPOSIT	150,000.00
EFT16969	13/01/2017	TOM WAINWRIGHT	STAFF REIMBURSEMENT - T. WAINWRIGHT	52.60
EFT16970	13/01/2017	MELISSA WAINWRIGHT	STAFF REIMBURSEMENT - M. WAINWRIGHT	52.60
EFT16971	13/01/2017	SADDLEBACK CONTRACTING PTY LTD	DOZER & LOADER HIRE - RANFORD FIRE	15,589.75
EFT16972	13/01/2017	PRO-MET EXPRESS	DELIVERY CHARGES - LIBRARY	66.30
EFT16973	13/01/2017	AVON WASTE	RUBBISH BIN COLLECTION SERVICE	11,198.02
EFT16974	13/01/2017	BODDINGTON GOLF CLUB	SPONSORSHIP	1,500.00

Attachments 8.2.2 A

LISTING OF ACCOUNTS SUBMITTED FOR PAYMENT - JANUARY 2017

Chq/EFT	Date	Name	Description	Amount
EFT16975	13/01/2017	GREG DAY MOTORS	MONTHLY FUEL ACCOUNT	7,847.08
EFT16976	13/01/2017	ELIZABETH HOEK	COUNCILLOR ALLOWANCES	1,428.75
EFT16977	13/01/2017	WESTERN AUSTRALIAN LOCAL GOVERNMENT ASS.	STAFF TRAINING - T. HODDER	567.00
EFT16978	13/01/2017	BODDINGTON NETBALL ASSOCIATION	LOAF FUNDING	815.00
EFT16979	13/01/2017	BODDINGTON STORE	MONTHLY STATIONERY ACCOUNT	10.90
EFT16980	13/01/2017	BODDINGTON SWIMMING CLUB INC.	KIDSPORT FUNDING	1,485.00
EFT16981	13/01/2017	SOUTH WEST FIRE UNITS	PUMP PARTS - BBFB	616.00
EFT16982	13/01/2017	THE LOCK MAN SECURITY	DOOR LOCK REPAIRS - MARRADONG FIRE SHED	120.00
EFT16983	17/01/2017	BODDINGTON HARDWARE AND NEWSAGENCY	FENCING MATERIAL - DAYS RD	3,600.13
EFT16984	31/01/2017	BODDINGTON MEDICAL CENTRE	PRE-EMPLOYMENT MEDICAL - W. WAINWRIGHT	352.00
EFT16985	31/01/2017	T-QUIP	PARTS - TORO BT018	899.60
EFT16986	31/01/2017	COATES HIRE	TRAFFIC LIGHTS HIRE - HARVEY QUINDANNING RD	1,302.13
EFT16987	31/01/2017	OFFICEWORKS BUSINESS DIRECT	TUBECLIPS	331.95
EFT16988	31/01/2017	CROSSMAN HOT WATER & PLUMBING	MAINS WATER - MARRADONG FIRE SHED	180.40
EFT16989	31/01/2017	WESTERN AUSTRALIAN LAND INFORMATION	GRV INTERIM VALUATIONS	486.85
EFT16990	31/01/2017	BODDINGTON TYRE SERVICE	TYRES - FIRE INCIDENT 351289	1,021.00
EFT16991	31/01/2017	ABCO PRODUCTS PTY LTD	COMMERCIAL CLEANING SUPPLIES - CARAVAN PARK	427.55
EFT16992	31/01/2017	EDGE PLANNING & PROPERTY	TOWN PLANNING SERVICES FEE	1,834.25
EFT16993	31/01/2017	ALINTA SALES	ELECTRICITY CHARGES - POOL & CARAVAN PARK	3,027.04
EFT16994	31/01/2017	COURIER AUSTRALIA TOLL IPEC	COURIER CHARGES	82.80
EFT16995	31/01/2017	COLOR CONTRAST DECORATORS	EXTERIOR PAINTING - ELC	5,923.50
EFT16996	31/01/2017	ALL PUMPS & WATERBORING	HEATING PUMPS REPAIRS - SWIMMING POOL	4,985.50
EFT16997	31/01/2017	COUNTRY SPARKY SERVICES	PUMP WORK - TOWN OVAL	1,058.44
EFT16998	31/01/2017	ROCHELLE KIM ELLIS	STAFF REIMBURSEMENT - K. ELLIS	53.57
EFT16999	31/01/2017	SPYKER TECHNOLOGIES PTY LTD	SUPPLY & INSTALL CCTV - NEW REC CENTRE	14,426.10
EFT17000	31/01/2017	WATERMAN IRRIGATION AUSTRALIA	STANDPIPE REMOTE ACCESS CHARGES	125.40
EFT17001	31/01/2017	CECIL GRANT BARTLE	STAFF REIMBURSEMENT - G. BARTLE	324.00
EFT17002	31/01/2017	BODDINGTON MINI SKIPS	STREET BIN RUBBISH COLLECTION SERVICE	2,726.84
EFT17003	31/01/2017	COALCLIFF PLANT HIRE & CIVIL CONTRACTING	WATER CARTING - HARVEY QUINDANNING RD	22,528.00
EFT17004	31/01/2017	SIMON'S MARKET CAFE	REFRESHMENTS - DFES RECOVERABLE	1,260.00

Attachments 8.2.2 A

LISTING OF ACCOUNTS SUBMITTED FOR PAYMENT - JANUARY 2017

Chq/EFT	Date	Name	Description	Amount
EFT17005	31/01/2017	QUALITY PRESS	FIRS STATIONERY - FIRE BRIGADES	192.50
EFT17006	31/01/2017	CHRIS LITTLEMORE	STAFF REIMBURSEMENT - C. LITTLEMORE	150.86
EFT17007	31/01/2017	CLARKEYS CARPENTRY	REPAIRS - MEDICAL CENTRE & POOL	170.50
EFT17008	31/01/2017	RMS (AUST) PTY LTD	RMS LICENCE FEES - CARAVAN PARK	646.80
EFT17009	31/01/2017	JOHN ROBERT ALLERT (RENTAL PROPERTY)	MONTHLY RENT - 26A HOTHAM AVE	1,083.33
EFT17010	31/01/2017	BEAVER TRAFFIC MANAGEMENT PTY LTD	TRAFFIC CONTROL - HARVEY QUINDANNING RD	577.50
EFT17011	31/01/2017	JULIE DAWN STEWART	STAFF REIMBURSEMENT - J. STEWART	216.27
EFT17012	31/01/2017	WOOD & GRIEVE ENGINEERS	SCHEMATIC DESIGN & DESIGN DEVELOPMENT - INDEPENDENT	2,268.75
EFT17013	31/01/2017	APV VALUERS & ASSET MANAGEMENT	VALUATION OF LAND & BUILDING ASSETS	1,423.40
EFT17014	31/01/2017	PARA MOBILITY	PLATYPUS STEPS - SWIMMING POOL	4,510.00
EFT17015	31/01/2017	JDS GLASS & ALUMINIUM	REPLACE WINDOW GLASS - PAVILLION	396.00
EFT17016	31/01/2017	SUSTAINABILITY WA PTY LTD	THERMAL PERFORMANCE ASSESSMENT - INDEPENDENT LIVING	1,529.00
EFT17017	31/01/2017	BODDINGTON SERVICE STATION	BRAKE REPAIRS - TOYOTA HILUX BT06	1,156.45
EFT17018	31/01/2017	GREG DAY MOTORS	REIMBURSE FOR BODDINGTON DOLLARS CHRISTMAS LIGHTS	100.00
EFT17019	31/01/2017	IT VISION	MONTHLY PAYROLL SERVICE	2,182.13
EFT17020	31/01/2017	BODDINGTON COMMUNITY RESOURCE CENTRE INC	GRANT FUNDING INSTALMENT	3,850.00
EFT17021	31/01/2017	THE LOCK MAN SECURITY	LOCK REPAIRS & DIGITAL LOCK INSTALLATION - YOUTH CENTRE & SES	595.00
17558	31/01/2017		MISPRINT	
17559	31/01/2017	ROBERT ARTHUR KNOX	CROSSOVER CONTRIBUTION - LOT 160 CROSSMAN RD	630.00
DD9399.1	01/01/2017	WA LOCAL GOVERNMENT SUPERANNUATION PLAN	Payroll deductions	9,851.18
DD9399.2	01/01/2017	WILLIAM KELVIN WALDOCK	Superannuation contributions	865.17
DD9399.3	01/01/2017	REST SUPERANNUATION FUND	Superannuation contributions	285.51
DD9399.4	01/01/2017	AUSTRALIAN SUPER (WESTSCHEME)	Superannuation contributions	943.20
DD9399.5	01/01/2017	PRIME SUPER PTY LTD	Superannuation contributions	354.19
DD9399.6	01/01/2017	MLC MASTERKEY SUPER FUNDAMENTALS	Superannuation contributions	215.21
DD9399.7	01/01/2017	SUNCORP EVERYDAY SUPER	Superannuation contributions	96.29
DD9406.1	05/01/2017	MOTORPLAN PTY LTD	CEO VEHICLE LEASE 1EXP571	1,885.66
DD9406.2	03/01/2017	WESTNET	INTERNET CHARGES - MEDICAL CENTRE	39.95
DD9406.3	04/01/2017	WESTNET	INTERNET CHARGES - POOL & SHIRE	234.90
DD9406.4	03/01/2017	TELSTRA	MOBILE PHONE CHARGES - SES	200.43

Attachments 8.2.2 A

LISTING OF ACCOUNTS SUBMITTED FOR PAYMENT - JANUARY 2017

Chq/EFT	Date	Name	Description	Amount
DD9406.5	06/01/2017	TELSTRA	MOBILE PHONE CHARGES - SHIRE	2,120.39
DD9406.6	10/01/2017	SYNERGY	ELECTRICITY CHARGES - Various Buildings	3,962.95
DD9406.7	03/01/2017	PRINTSYNC BUSINESS SOLUTIONS	COPIER CHARGES - ADMIN	226.86
DD9411.1	11/01/2017	SYNERGY	ELECTRICITY CHARGES - Various Buildings	767.90
DD9414.1	13/01/2017	SYNERGY	ELECTRICITY CHARGES - Various Buildings	2,763.40
DD9416.1	15/01/2017	WA LOCAL GOVERNMENT SUPERANNUATION PLAN	Payroll deductions	9,990.56
DD9416.2	15/01/2017	WILLIAM KELVIN WALDOCK	Superannuation contributions	865.17
DD9416.3	15/01/2017	REST SUPERANNUATION FUND	Superannuation contributions	288.71
DD9416.4	15/01/2017	AUSTRALIAN SUPER (WESTSCHEME)	Superannuation contributions	991.53
DD9416.5	15/01/2017	PRIME SUPER PTY LTD	Superannuation contributions	354.19
DD9416.6	15/01/2017	MLC MASTERKEY SUPER FUNDAMENTALS	Superannuation contributions	313.29
DD9416.7	15/01/2017	SUNCORP EVERYDAY SUPER	Superannuation contributions	118.08
DD9418.1	16/01/2017	WESTERN AUSTRALIAN TREASURY CORPORATION	Loan No. 83 Interest payment - Doctors Residence	6,760.75
DD9420.1	16/01/2017	SYNERGY	ELECTRICITY CHARGES - Various Buildings	2,587.50
DD9420.2	16/01/2017	CANON FINANCE	KYOCERA TA3501i MONTHLY LEASE	157.30
DD9424.1	17/01/2017	SYNERGY	ELECTRICITY CHARGES - Various Buildings	618.85
DD9424.2	17/01/2017	TELSTRA	PHONE CHARGES - SES LANDLINES	236.23
DD9426.1	20/01/2017	WESTERN AUSTRALIAN TREASURY CORPORATION	Loan No. 103 Interest payment - Recreation Centre	26,463.74
DD9429.1	23/01/2017	WESTERN AUSTRALIAN TREASURY CORPORATION	LOAN GUARANTEES	9,335.52
DD9429.2	23/01/2017	TELSTRA	PHONE CHARGES - EHO RESIDENCE	49.21
DD9431.1	24/01/2017	TELSTRA	PHONE CHARGES - SHIRE ADMIN	1,553.23
DD9433.1	25/01/2017	TELSTRA	PHONE CHARGES - LICENSING	25.95
DD9435.1	29/01/2017	WA LOCAL GOVERNMENT SUPERANNUATION PLAN	Payroll deductions	10,170.30
DD9435.2	29/01/2017	WILLIAM KELVIN WALDOCK	Superannuation contributions	865.17
DD9435.3	29/01/2017	REST SUPERANNUATION FUND	Superannuation contributions	296.06
DD9435.4	29/01/2017	AUSTRALIAN SUPER (WESTSCHEME)	Superannuation contributions	1,120.78
DD9435.5	29/01/2017	PRIME SUPER PTY LTD	Superannuation contributions	354.19
DD9435.6	29/01/2017	MLC MASTERKEY SUPER FUNDAMENTALS	Superannuation contributions	311.76
DD9435.7	29/01/2017	SUNCORP EVERYDAY SUPER	Superannuation contributions	118.08

Attachments 8.2.2 A

LISTING OF ACCOUNTS SUBMITTED FOR PAYMENT - JANUARY 2017				
Chq/EFT	Date	Name	Description	Amount
DD9435.8	29/01/2017	MLC SUPER FUND - PLUM SUPER	Superannuation contributions	185.68
DD9437.1	30/01/2017	KLEENHEAT GAS	BULK GAS - CARAVAN PARK	184.20
DD9437.2	30/01/2017	TELSTRA	STREET WI-FI	135.00
DD9440.1	31/01/2017	TELSTRA	MOBILE PHONE CHARGES - SES	127.31
DD9440.2	31/01/2017	SYNERGY	ELECTRICITY CHARGES - BMO SHED	49.50
			TOTAL MUNICIPAL	<u>564,645.57</u>
			TOTAL PAYMENTS	<u>566,124.23</u>

8.2.3 Rates Interest Write-off for 5 properties

Date: 14 February 2017
Author: J Rendell Manager Financial Services

Summary

The Executor of a deceased estate containing 6 Boddington residences has written to have Council consider writing off the shortfall of interest on each of them, totalling \$176.88.

Background

The Executor phoned the office 14/7/16 to discuss payment of outstanding amounts and seek confirmation as to what the total payout amount would be.

The Executor subsequently paid all outstanding rates (4 years) and interest excluding the amounts below, on 28/7/16. (Total of \$27,723.72).

The shortfall amounts were:

A258 \$40.66; A291 \$25.93; A481 \$25.93; A482 \$25.93; A936 \$25.93; A1096 \$34.08

On 05/12/16 an overdue letter was sent to the Executor for these remaining amounts.

On 09/12/16, Council received a response requesting the Shire adjusts its records as the amount "she was told as outstanding on the date she phoned was what was paid".

As Council's Officer at the time is no longer in our employ, we cannot dispute the claim and therefore accept the Executor's reason. It would appear, however that the amount of \$176.88 is the amount of interest that would have accrued from 1/7/16-28/7/16 which suggests that at the time of the call, July's already accrued interest had not been included.

CEO has authority under Council's policy to write-off up to \$20.00 per assessment only.

Comment

Debt collection is a very costly and time consuming task which Council staff only commit to after all other avenues have been exhausted and no communication has been made with the ratepayer.

Strategic Implications - Nil

Statutory Environment - Nil

Policy Implications - Nil

Financial Implications

If council agreed to write off the fees, then the net cost to Council would be \$176.88.

Economic Implications - Nil.

Social Implications - Nil

Environmental Considerations - Nil

Consultation Nil

COUNCIL RESOLUTION**21/17****Moved Cr Hoek**

That Council advise ratepayer A258, A291, A481, A482 and A936 that it endorses their request to write-off the \$176.88 in interest charges.

Seconded:

Cr Glynn

Carried:6/0

8.2.4 Debt Collection Fee Write-off for A1359

Date: 14 February 2017

Author: J Rendell Manager Financial Services

Summary

An absentee Ratepayer (1) is requesting Council writes off debt collection fees of \$768.30 and interest levied of \$348.52 on the basis they were incurred by the wrong Ratepayer (2).

Background

In 2012, Ratepayer (2) purchased a property and paid rates until the 2014/15 assessment.

Overdue notices were sent to the contact recorded address in Balga on 11/5/16 and 25/5/16.

As there was no response to either, the account was issued to the collection agency.

A skip trace (15/9/16) located Ratepayer (2) at a Bullsbrook address and on 20/9/16 a reissue of the debt notice was undertaken by the collection agent.

On 7/11/16 Ratepayer (1) rang the office to advise that Ratepayer (2) had transferred the property to him in January 2014 and therefore the outstanding amounts were not hers.

When asked, Ratepayer (1) confirmed his current address to be the same Bullsbrook address as was identified where Ratepayer (2) was residing.

A check with Landgate records confirms the transfer of ownership in January 2014, however no record of advice being received at the shire can be located or established.

Landgate could not offer any reason why the Shire would not have received the appropriate advice.

The duplicate Certificate of Title confirming the transfer shows Ratepayer (1) being at the same Balga address as ratepayer (2) and where the overdue notices had been sent.

A letter showing the make-up of the total debt was sent to Ratepayer (1) who rang on 18/11/16 advising he would pay the rates but not interest or collection expenses "because it was not his fault we had incorrect records".

There is no record on file indicating that either ratepayer (2), or Ratepayer (1) did at any time advise the Shire of a change of address.

Council's Officer took the opportunity at this time to seek confirmation from Ratepayer (1) that ratepayer (2) was in fact his Ratepayer (1)'s common law partner.

An expectation exists that Ratepayer (1) would know of the rates requirements from at least the time of property acquisition but made no attempt to contact the Shire.

Being absent from the property does not relieve the responsibility from an owner.

There could be a reasonable belief that Ratepayer (1) should share culpability with respect to interest incurred but what of the collection costs.

The collection of overdue rates and charges was issued to Ratepayer (2) with the belief that she was the owner, which turned out to not be the case. As a consequence, this debt, incurred after transfer of land, would not be enforceable against her.

Similarly, as the actions and costs incurred were all taken against Ratepayer (2) and not against Ratepayer (1), recovery from Ratepayer (1) would not be enforceable.

Did Council's Officer err, or did the appropriate advice from Landgate not reach the Shire? There is no way to determine the answer to this, 3 years and 2 officers later.

Comment

Debt collection is a very costly and time consuming task which Council staff only commit to after all other avenues have been exhausted and no communication has been made with the ratepayer.

Strategic Implications - Nil

Statutory Environment - Nil

Policy Implications - Nil

Financial Implications

If council agreed to write off the fees, then the net cost to Council would be \$768.30.

Economic Implications - Nil.

Social Implications

If council agreed to write off the fees, then the cost would ultimately be borne by other ratepayers which would be regarded as inequitable.

Environmental Considerations- Nil

Consultation Nil

COUNCIL RESOLUTION

22/17

Moved Cr Crilly

That Council:

Advise ratepayer A1359 that it is prepared to authorise the debt write off in the following:-

1. Debt collection fees of \$768.30 be written off in full given they are directed against a person who is not and was not the registered owner of the property at the time that the rates became overdue and therefore unenforceable against either party: and
2. That Council rejects the proposal to write off rates and charges of \$348.52 in respect of ratepayer (2), being the lawful owner of the property from January 2014 incurs 100% of the interest charge on the basis there is the expectation that he would know rates were due but made no attempt to contact the Shire to enquire where the notices might be going as he was not receiving them.

Seconded:

Cr Glynn

Carried: 6/0

8.3 PRINCIPAL ENVIRONMENTAL HEALTH OFFICER/
BUILDING SURVEYOR:

Nil.

8.4 MANAGER WORKS & SERVICES:

Nil.

Cr Collins left the room at 5:26pm as she declared a Financial Interest in Item 8.5.1 as she is a Real Estate Agent.

8.5 DIRECTOR CORPORATE & COMMUNITY SERVICES:

8.5.1 Fire Access Track Exemptions

Location:	755 Crossman Road,
Applicant:	R C Hyland.
File Ref. No:	ADM 0154
Date:	14 February 2017
Author:	Director Corporate & Community Services
Attachment	8.5.1A Diagram of property

Summary

Council is to consider endorsing an exemption to the owner of a property as recommended in consultation with the Chief Bush Fire Control Officer.

Background

The Fire Access Track Order for 2016/17 requires the owner or occupier of land to apply for an exemption to Council if it is considered impractical to provide Fire Access Tracks as required by the Notice, or if natural features render Fire Access Tracks difficult to install.

The property had been inspected in November 2016 and a large section remained inaccessible and required exemption consideration.

Council held over this item at the earlier Special Council meeting on 7 February 2017, requesting that the property be re-inspected. The CBFCO was contacted and he, along with the Captain of the Crossman brigade, were to undertake the review.

Flooding rains from 9th/10th February 2017 has made the review obsolete in that the entire area in question was again flooded from the Crossman River through to where the owner had placed an eastern access track through the property.

Comment

A large section of their property is natural vegetation, salt impacted, within the flood area and receives overflow from the Crossman River. This creates the problem in endeavouring to provide a fire access track of any relevance or permanency.

The CBFCO confirms the owner maintains fire access tracks to a high standard on the remaining section.

Strategic Implications – Nil

Statutory Environment

2016/17 Fire Access Track Order

If it is considered for any reason to be impractical to clear Fire Access Tracks or remove flammable materials as required by this notice, or if natural features render Fire Access

Tracks unnecessary, you may apply to the Council in writing not later than 01 October 2016 for permission to provide Fire Access Tracks in alternative positions or to take alternative action to abate fire hazards on the land. If permission is not granted by the Council, you shall comply with the requirements of this notice.

Policy Implications

4.2 That a Fire Access Track notice accompany the annual Rates Notice and be placed in the Community Newsletter during August and September each year;

- i) reminding landowners of the requirements of the Fire Access Track order;
- ii) advising that inspections will be undertaken after 15 November in each year;
- iii) advising that if Fire Access Tracks are not constructed to the required standard infringement notices may be issued.

Objective:

To encourage landowners to install Fire Access Tracks in accordance with Council requirements.

Financial Implications - Nil

Economic Implications - Nil

Social Implications - Nil

Environmental Considerations

By complying with the Fire Access Track Order, ratepayers ensure that they are attempting to provide protection for life and property in the event of a bushfire, which would potentially slow down the spread of fire/damage to other properties and the need to call out emergency services to deal with such an event.

Consultation – CBFCO

Options

Council can resolve:

- 1 the Officer's Recommendation;
- 2 to not endorse the Fire Access Track exemption for the applicants, requiring the applicants to comply with Council's Fire Break Order or face prosecution, giving reasons.

Voting Requirements - Simple Majority.

OFFICER'S RECOMMENDATION – ITEM 8.5.1

COUNCIL RESOLUTION

23/17

Moved Cr Smart

That Council grant exemption from Council's 2016/17 Fire Access Track Order to the following property until 31 October 2017:

Property Owner	Description of Land	Exemption Requested
RC Hyland	755 Crossman Rd Crossman WA	Exemption from implementing a Fire Access Track to most of the east of the property.

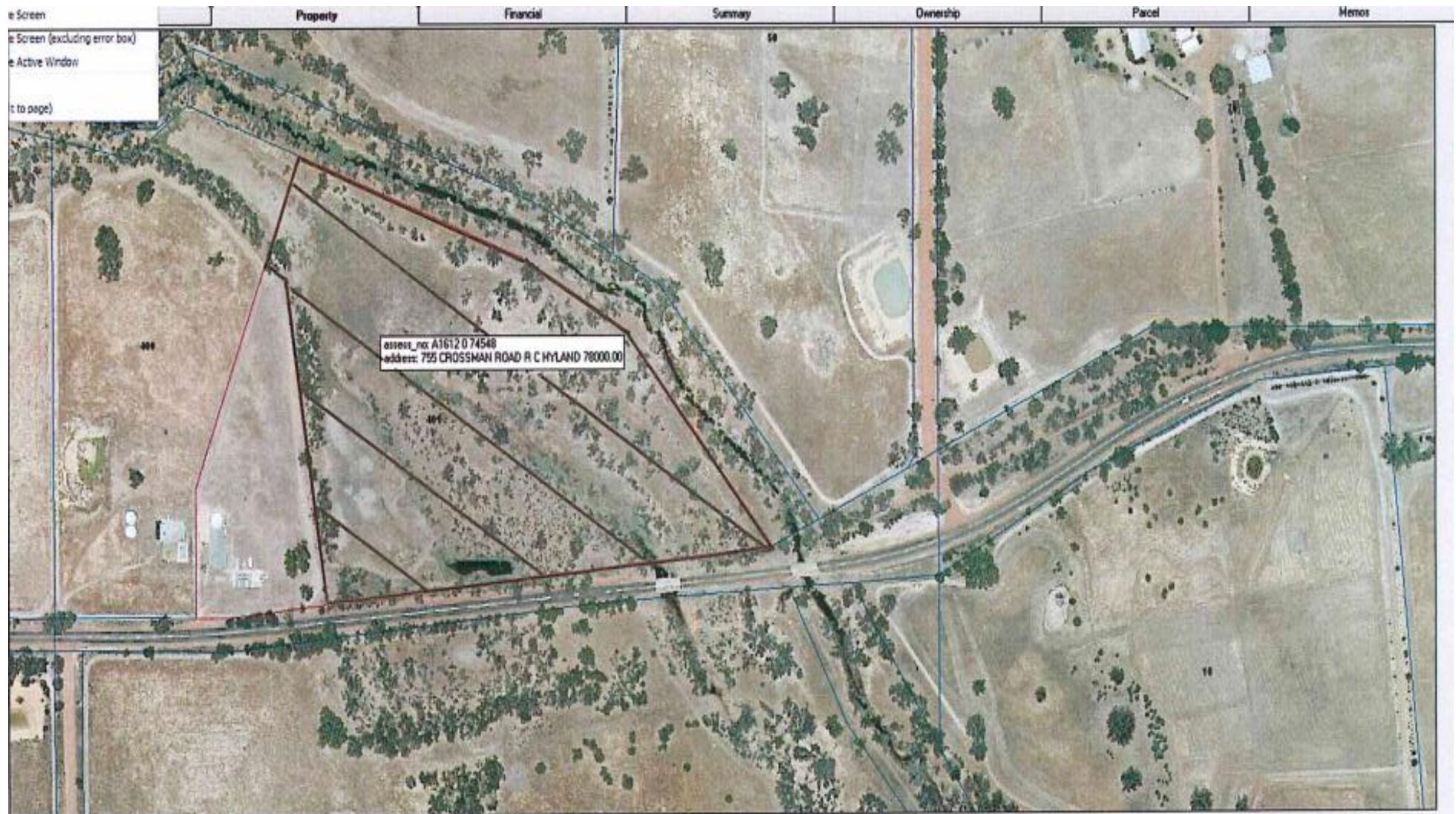
Seconded:

Cr Crilly

Carried: 5/0

Cr Collins returned to Chambers at 5:28pm.

Attachment 8.5.1 A



8.5.2 Assisting Local Sportsmen and Women – Mahlon Reid

Applicant: Mr Mahlon Reid
File Ref. No: ADM 0261
Disclosure of Interest: Nil
Date: 14 February 2017
Author: Grant Bartle Director Corporate & Community Services
Attachments: 8.5.2A Letters from WA Rifle Association Inc.

Summary

Council is to consider an application from Mr Mahlon Reid for financial assistance towards a trip to Lower Light, South Australia and Brisbane, Queensland as a member of the State F Class Long Distance Rifle Shooting team to contest National Titles.

Background

Mahlon is a long standing ratepayer of Boddington, having started the Boddington Rifle Club in 1971 and has been an office bearer every year.

Mahlon Reid has been successfully selected by WA Rifle Association Inc. to attend the National Titles on behalf of one of the three WA state teams. These titles are in South Australia in May 2017 and is not a professional competition. After those National Titles, he is then travelling to Brisbane to represent WA in the Veteran's pairs National championship.

Mahlon advises having been representing the State for the past ten years and has not previously sought any funding assistance.

Comment

Mahlon is travelling by car and towing a caravan rather than the expense of flights, hotel accommodation, taxis etc. and is seeking a Council grant of \$500.

Mahlon Reid meets 5 of the 6 eligibility criteria under Council's policy 10.17 Assisting Local Sportsmen & Women. The only exception being he is not within the age bracket of 12-21.

Strategic Implications - Nil
Statutory Environment - Nil

Policy Implications

Council Policy 10.17 Assisting Local Sportsmen & Women states that:

The Shire of Boddington will provide financial assistance – Local Sporting Champions Grant - for local sports men and women towards the cost of travel, accommodation, uniforms or equipment when competing at an official national sporting organisation (NSO) endorsed state or national sporting competition.

To be eligible to apply for a Local Sporting Champions grant, individuals and all team members must meet the following eligibility criteria:

- be between 12 and 21 years of age (inclusive) at the time of the nominated sporting competition;
- be a member of the immediate family of a resident or ratepayer of the Shire of Boddington;
- be participating as an athlete in an official state or national sporting competition which is endorsed by the relevant national sporting organisation (NSO) or national school sport competition. This does not include coaching or officiating at such competitions;
- be required to travel greater than 250km return to participate in the nominated NSO endorsed state or national sporting competition, or national school sport competition
- must not have been the recipient of a grant, either as an individual or a member of a team, within the year ending 30 June;
- must not be participating in a professional competition that involves prize money.

Grants will be allocated up to a maximum amount of \$1,500. It is not expected that a grant would be allocated for the total cost of travel, accommodation, uniforms or equipment, but be a contribution to that cost.

Financial Implications

Council has budgeted \$3,500 for donations during 2016/17 and to date has expended \$915.

Economic Implications - Nil

Social Implications - Nil

Environmental Considerations – Nil

Consultation –

Mahlon Reid - Applicant

David Cole – State F Class Team Captain

George Wittorff – State Veterans Captain

Options

Council may:

1. Approve the donation of \$500;
2. Approve a donation of a lesser amount, giving reasons; or
3. Not approve a donation, giving reasons.

Voting Requirements - Simple Majority

OFFICER RECOMMENDATION – ITEM 8.5.2A

COUNCIL RESOLUTION

24/17

Moved Cr Hoek

That Council contribute an amount of \$500 towards travel and accommodation expenses for Mahlon Reid's National titles trip to South Australia and Queensland to represent Western Australia in the State F Class Long Distance Rifle Shooting Team and Veterans Pairs in May /June 2017.

Seconded:

Cr Collins

Carried: 6/0

West Australian Rifle Association Inc.

PO Box 1559 Wangara DC 6947
ABN: 38 425 252 091 WA Firearms Dealer's Lic. No.: 9993669
Web: www.wara.asn.au Email: admin@wara.asn.au



To Whom it may Concern.

Re: West Australian Rifle Association State F Class Teams to Lower Light SA 5501.

This letter is to confirm that Mahlon Reid has been selected for the West Australian Rifle Association F Class Teams to compete in Lower Light in May 2017 to contest the National F Class Titles for Long Distance Rifle Shooting.

They will be required to travel to Lower Light in South Australia on the weekend of the 29th-30th April. The competitions will occur from the 1st May through to the 7th and they will be returning to Perth from the 8th May

The teams are essentially self funded with some financial contribution towards ammunition and nomination fees from the State Association however the majority of costs in travel, accommodation and sporting equipment is met by the individuals who are competing.

Thus, any support in sponsorship that the teams may obtain will assist in them reaching their goals and enable us to put forward the best equipped and well prepared teams possible.

We thank you for your support and request you contact us should you require any further information.

Kind regards,

DGC/le.

Mr. David Cole

State F Class Team Capitan

West Australian Rifle Association Inc.

ABN: 38 425 252 091 WA Firearms Dealer's Lic. No.: 9993669
Web: www.wara.asn.au Email: admin@wara.asn.au

West Australian Rifle Association Inc.



To Whom It May Concern:

This to verify that Mr Mahlon Reid is a member of the Western Australian Veterans Rifle Team, taking his place as one of two F Class shooters, to compete in the National Rifle Association of Australia (NRAA) National Veterans Teams Championships.

These matches will take place on Belmont Rifle Range, Brisbane, Queensland on 25th and 26th June, 2017.

Yours faithfully,

George A Wittorff
Captain – WARA Veterans Rifle Team 2017.

15 February 2017

8.5.3 WA Country Health Service Contribution Agreement

File Ref. No: ADM0579
Disclosure of Interest: Nil
Date: 14th February 2017
Author: Grant Bartle
Confidential Attachments: 8.5.3A Draft Contribution Agreement for WA Country Health Service

Summary

Council is to consider authorising execution of a new agreement between the Shire of Boddington and WA Country Health Service for Consultancy room 4 at the Boddington Medical Centre.

Background

An initial Contribution Agreement was entered into from 11th April 2013 for 1 year plus provided a 1 year option to renew. A further agreement then of 1 year plus 1 year option commenced 11th April 2015 and expires on 10th April 2017.

The Contributor (WACHS) use the consultancy room #4, one day a week, being a Wednesday.

A new Contribution Agreement is proposed with WACHS.

Comment

The new Agreement is for a 3 year term with effect from 11th April 2017, pending Council approval and provides a further 3 x (1) year options.

Strategic Implications – Nil at this time.

Statutory Environment – Nil at this time

Policy Implications – Nil at this time

Financial Implications

The Contribution Agreement requires the Contributor to maintain an insurance policy in respect of the Lessee's contents and chattels located on or in the Leased premises.

The Contributor is also required to maintain public liability, workers compensation and professional indemnity insurances, each no less than Ten Million dollars (\$10,000,000).

The Contribution rate recommendation is to remain at \$50.00 per day, payable annually in advance, reviewable after the initial 3 year term.

Economic Implications – Nil

Social Implications

WACHS provides a full range of services to adults and children throughout regional Western Australia.

Environmental Considerations – Nil

Consultation

S Potocznyj - WACHS Wheatbelt

Options

Council can adopt:

1. the Officer's Recommendation;
2. amend the Officer's recommendation; or
3. not adopt the Officer's Recommendation, providing reasons for doing so.

Voting Requirements - Simple Majority

OFFICER'S RECOMMENDATION – ITEM 8.5.3

COUNCIL RESOLUTION

25/17

Moved: Cr Crilly

That Council:

1. offer the draft Contribution Agreement included at Attachment 8.5.3A, to the WA Country Health Service.
2. delegates to the Chief Executive Officer the authority to:
 - a. negotiate any minor changes to the final terms of the contribution agreement; and
 - b. execute a finalised Contribution Agreement with the WA Country Health Service.

Seconded:

Cr Glynn

Carried: 6/0

Attachment 8.5.3A

BODDINGTON HEALTH CENTRE – CONTRIBUTION AGREEMENT

THIS AGREEMENT is dated this of 2017.

PARTIES: The SHIRE OF BODDINGTON of 39 Bannister Road, Boddington 6390 in the State of Western Australia ("Shire")

and

WA Country Health Service of PO Box 690, Northam in the State of Western Australia ("Contributor")

IT IS AGREED

1 USE OF PREMISES AND COMMON AREAS

- 1.1 The Shire permits the Contributor use of the Premises, the Common Areas and the Shire's Plant and Equipment on the terms and conditions set out in this Agreement.

2 CONTRIBUTION

- 2.1 In consideration for being given the permission to use the Premises, the Common Areas and the Shire's Plant and Equipment, the Contributor shall pay to the Shire the Contribution of \$50.00 per day, payable annually in advance during the term of this Agreement.

3 SCOPE OF AGREEMENT

- 3.1 Nothing contained in this Agreement shall be construed as granting to the Contributor any interest in the Land comprising the Premises, the Common Areas or the Shire's Plant and Equipment, other than a permission to use the Premises, the Common Areas and the Shire's Plant and Equipment under the terms and conditions set out in this Agreement.
- 3.2 This Agreement does not confer exclusive possession of the Premises. The Shire's personnel may enter the Premises at any time for any reasonable purpose.

4 ALLOCATION OF USE OF PREMISES

- 4.1 Subject to the Contributor complying with the terms and conditions of this Agreement, the Shire shall allocate the use of the Premises to the Contributor each Wednesday during the Term.

5 TERM

- 5.1 The term of this Agreement shall be 36 months commencing on 11 April 2017, subject to:

C:\Users\lea\AppData\Local\Microsoft\Windows\Temporary Internet Files\Content.Outlook\RMVFV5RP\WACHS Contribution Agreement Room 4 (002).docx

Attachment 8.5.3A

- (a) the provisions for earlier termination contained in this Agreement; and
- (b) the option for renewal or extension of the Term (if any) specified in this Agreement.

6 TERMINATION

6.1 Subject to the other terms and conditions of this Agreement:

- (a) the Shire may terminate this Agreement by giving the Contributor one (1) month's notice in writing; and
- (b) the Contributor may terminate this Agreement by giving the Shire one (1) month's notice in writing.

6.2 If the Contributor defaults in one or more of the following respects:

- (a) wholly or partly suspends the performance of the Health Services from the Premises without reasonable cause;
- (b) fails to proceed with the performance of the Health Services from the Premises regularly or diligently; or
- (c) fails to hold (or fails to ensure that its employees, subcontractors or subcontractors' employees performing the Health Services from the Premises hold) the appropriate registration under the *Health Practitioner Regulation National Law (Western Australia)* in the relevant Health Profession,

then the Shire may send the Contributor a notice specifying the default and stating the intention of the Shire to terminate this Agreement.

6.3 If within fourteen (14) days of the receipt of the notice the Contributor fails to rectify the default or fails to satisfy the Shire that the default will be rectified without further delay to the performance of the Health Services, then the Shire, without prejudice to any other rights or remedies, may by written notice to the Contributor terminate this Agreement.

7 OPTIONS TO RENEW

7.1 The Contributor shall have an option to renew this Agreement for a further term of 12 months at the expiry of the initial Term and two (2) further terms each of 12 months upon expiry of the preceding term.

7.2 The option to renew shall be exercised not more than three (3) months and no less than one (1) month prior to the expiry of the initial Term or expiry of each of the preceding terms by written notice by the Contributor to the Shire.

C:\Users\lea\AppData\Local\Microsoft\Windows\Temporary Internet Files\Content.Outlook\RMVFV5RPA\WACHS
Contribution Agreement Room 4 (002).docx

Attachment 8.5.3A

- 7.3 In the event that the Contributor wishes to exercise the first option to renew this Agreement for a further term, the Contribution shall be reviewed at the expiry of the initial Term and the reviewed Contribution shall be such amount as is mutually agreed by the parties.

8 USE OF PREMISES AND COMMON AREAS

- 8.1 The Contributor shall use the Premises only for the purpose of providing Health Services and not for any other purpose.
- 8.2 The Contributor shall not allow any person other than its employees, subcontractors or its subcontractors' employees to use the Premises without prior approval by the Shire. The Contributor shall ensure that all its employees, subcontractors and subcontractors' employees comply with the terms of this Agreement at all times while using the Premises.
- 8.3 The Contributor shall not do, or allow to be done, any act or thing that may cause or permit the Common Areas to be used for any purposes other than that for which they were intended or to become damaged or otherwise deteriorate.
- 8.4 While using the Premises and the Common Areas, the Contributor shall not cause obstruction, disruption or annoyance to the Shire, users or occupiers of the other premises in the Building, other users of the Common Areas and any other persons legitimately present in the Building or the Premises.

9 REPAIR, MAINTENANCE AND CLEANING OF THE PREMISES AND THE COMMON AREAS

- 9.1 The Contributor shall:
- (a) repair, to the satisfaction of the Shire, any damage to the Premises, the Building (including the Common Areas) or the Shire's Plant and Equipment which has been caused by an act or omission of the Contributor or its employee, licensee, contractor or invitee;
 - (b) keep the Premises in a sanitary condition and clear of rubbish or debris and keep the Shire's Plant and Equipment in clean and good condition;
 - (c) not use the Common Areas for placing rubbish or debris of any kind, except in areas specifically provided for that purpose; and
 - (d) comply in all respects with the provisions of any Act (State or Federal), including, without limitation, the *Health Practitioner Regulation National Law (Western Australia)* in force affecting the Premises or the occupier or owner of the Premises and with all regulations, requisitions, orders and notices made or given under or pursuant to any such Act,

C:\Users\lea\AppData\Local\Microsoft\Windows\Temporary Internet Files\Content.Outlook\RMVFV5RP\WACHS
Contribution Agreement Room 4 (002).docx

Attachment 8.5.3A

but shall not otherwise be required to repair, maintain or clean the Premises, the Common Areas or the Shire's Plant and Equipment.

9.2 Subject to clause 9.1 above, the Shire shall be responsible for and bear the cost of:

- (a) all repairs and maintenance of the Premises, the Common Areas and the Shire's Plant and Equipment on the Premises and in the Common Areas;
- (b) cleaning of the Premises; and
- (c) cleaning of such parts of the Common Areas as are not required to be cleaned by the occupiers of the other premises in the Building.

10 OUTGOINGS

10.1 The Contributor shall not be liable for or bear the cost of the Shire's outgoings in respect of the Land and the Building, except for the cost referred to in clause 9.1(a) of this Agreement.

11 INSURANCE

11.1 The Shire shall insure the Building, for its full reinstatement value, against damage by usual insurable risks. The Shire shall also insure the Shire's Plant and Equipment for their full replacement value.

11.2 Any property owned by the Contributor and brought into the Premises, including but not limited to the Contributor's Plant and Equipment, will not be covered under the Shire's insurance and the Contributor shall provide and maintain its own insurance coverage for such property.

11.3 The Contributor shall not do or permit to be done any act or thing, which makes void existing insurance policies of the Shire in respect of the Building or the Shire's Plant and Equipment.

11.4 The Contributor shall effect and during the term of this Agreement maintain in the form appropriate to the Contributor's activities and acceptable to the Shire:

- (a) Public Liability Insurance for not less than ten million dollars (\$10 million) in respect of a single occurrence and for an unlimited number of claims;
- (b) such Workers' Compensation Insurance as is in accordance with legislation and awards applicable to Western Australia together with cover for common law liability for not less than ten million dollars (\$10 million) in respect of a single occurrence and for an unlimited number of claims; and
- (c) Professional Indemnity Insurance for not less than ten million dollars (\$10 million) in respect of a single occurrence and for an unlimited number of claims.

C:\Users\lea\AppData\Local\Microsoft\Windows\Temporary Internet Files\Content.Outlook\RMVFV5RP\WACHS
Contribution Agreement Room 4 (002).docx

Attachment 8.5.3A

12 RISK

- 12.1 The Contributor shall use the Premises and the Common Areas at the Contributor's own risk and the Contributor hereby releases to the full extent permitted by law the Shire and its agents, contractors and employees from all claims, demands, writs, summonses, actions, suits, proceedings, judgments, orders, decrees, damages, costs, losses and expenses of any nature whatsoever resulting from any accident, damage or injury arising out of or in any way connected with the Contributor's use of the Premises, the Common Areas, the Shire's Plant and Equipment and the Contributor's Plant and Equipment, except to the extent that the accident, damage or injury is due to the act, default or omission of the Shire or its agents, contractors (other than the Contributor) and employees.

13 INDEMNITY

- 13.1 The Contributor shall defend, hold harmless and indemnify and keep indemnified the Shire against all claims, demands, writs, summonses, actions, suits, proceedings, judgments, orders, decrees, damages, costs, losses and expenses of any nature whatsoever which the Shire may suffer or incur arising out of or in any way connected with the Contributor's use of the Premises, the Common Areas, the Shire's Plant and Equipment and the Contributor's Plant and Equipment.

14 NO ASSIGNMENT

- 14.1 The Contributor shall not assign this Agreement or any rights relating to this Agreement.

15 NOTICES

- 15.1 A notice or other communication required or permitted to be given by one party to another must be in writing and:
- (a) delivered personally;
 - (b) sent by pre-paid mail to the address of the addressee specified in this Agreement;
 - (c) sent by facsimile transmission to the facsimile number of the addressee with acknowledgment of receipt from the facsimile machine of the addressee; or
 - (d) sent by email to the email address of the addressee with a request for a "read notification" by the recipient.
- 15.2 A notice or other communication is taken to have been given (unless otherwise proved):
- (a) if delivered personally, at the time of delivery;

C:\Users\lea\AppData\Local\Microsoft\Windows\Temporary Internet Files\Content.Outlook\RMVFV5RPA\WACHS
Contribution Agreement Room 4 (002).docx

Attachment 8.5.3A

- (b) if mailed, on the second Business Day after posting;
- (c) if sent by facsimile before 4 pm on a Business Day at the place of receipt, on the day it is sent and otherwise on the next Business Day at the place of receipt; or
- (d) if emailed, at the time of the recipient acknowledging receipt by sending a "read notification" to the sender.

15.3 A party may change its address for service by giving notice of that change in writing to the other parties.

16 GOVERNING LAW AND JURISDICTION

16.1 This Agreement is governed by the laws of Western Australia.

16.2 Each party irrevocably submits to the exclusive jurisdiction of the courts of Western Australia.

17 COUNTERPARTS

17.1 This Agreement may be executed in any number of counterparts each of which will be an original but such counterparts together will constitute one and the same instrument and the date of this Agreement will be the date on which it is executed by the last party.

18 SEVERANCE

18.1 If any part of this Agreement is invalid or unenforceable, this Agreement does not include it. The remainder of this Agreement continues in full force.

19 DEFINITIONS

19.1 In this Agreement, unless otherwise indicated by the context:

- (a) *Building* means the building erected on the Land (as shown on the Site Plan in Annexure 1) in which the Premises are situated including any modifications, extensions or alterations made after the Commencement Date and also includes plant, equipment, fixtures and fittings on the Land, car parks and Common Areas.
- (b) *Business Day* means a day that is not a Saturday, Sunday, public holiday or bank holiday in Western Australia.
- (c) *Common Areas* means those parts of the Land and the Building that are set aside or designated for the use of the occupiers of the Building or their visitors, patients, employees and agents in common with each other and the Shire and include the areas delineated and marked Green on the Floor Plan in Annexure 2.

C:\Users\lea\AppData\Local\Microsoft\Windows\Temporary Internet Files\Content.Outlook\RMVFV5RP\WACHS
Contribution Agreement Room 4 (002).docx

Attachment 8.5.3A

- (d) *Contribution* means the amount payable by the Contributor as specified in clause 2 of this Agreement, and as subsequently reviewed and varied in accordance with clause 7.3 of this Agreement.
- (e) *Health Profession* has the meaning given to it in the *Health Practitioner Regulation National Law (Western Australia)*.
- (f) *Health Services* has the meaning given to it in the *Health Practitioner Regulation National Law (Western Australia)*.
- (g) *Health Practitioner Regulation National Law (Western Australia)* has the meaning given to it in section 4(1) of the *Health Practitioner Regulation National Law (WA) Act 2010*.
- (h) *Land* means 63 - 65 Hotham Avenue, Boddington, being Reserve 49937 and more specifically described as Lot 500 on Deposited Plan 61056, and being the whole of the land in Certificate of Crown Land Title Volume 3155 Folio 530.
- (i) *Premises* means that part of the Building as is known as Consulting Room 4 and as is delineated and marked yellow on the Floor Plan in Annexure 2.
- (j) *Shire's Plant and Equipment* means the plant and equipment listed in Annexure 3.
- (k) *Term* means the term of this Agreement referred to in clause 5 and any extension or renewal thereof.
- (l) *the Contributor's Plant and Equipment* means the plant and equipment listed in Annexure 4.

C:\Users\lea\AppData\Local\Microsoft\Windows\Temporary Internet Files\Content.Outlook\RMVFV5RP\WACHS
Contribution Agreement Room 4 (002).docx

Attachment 8.5.3A

EXECUTED AS AN AGREEMENT

Signed on behalf of the Shire of Boddington:

SHIRE OF BODDINGTON
CHIEF EXECUTIVE OFFICER

DATE

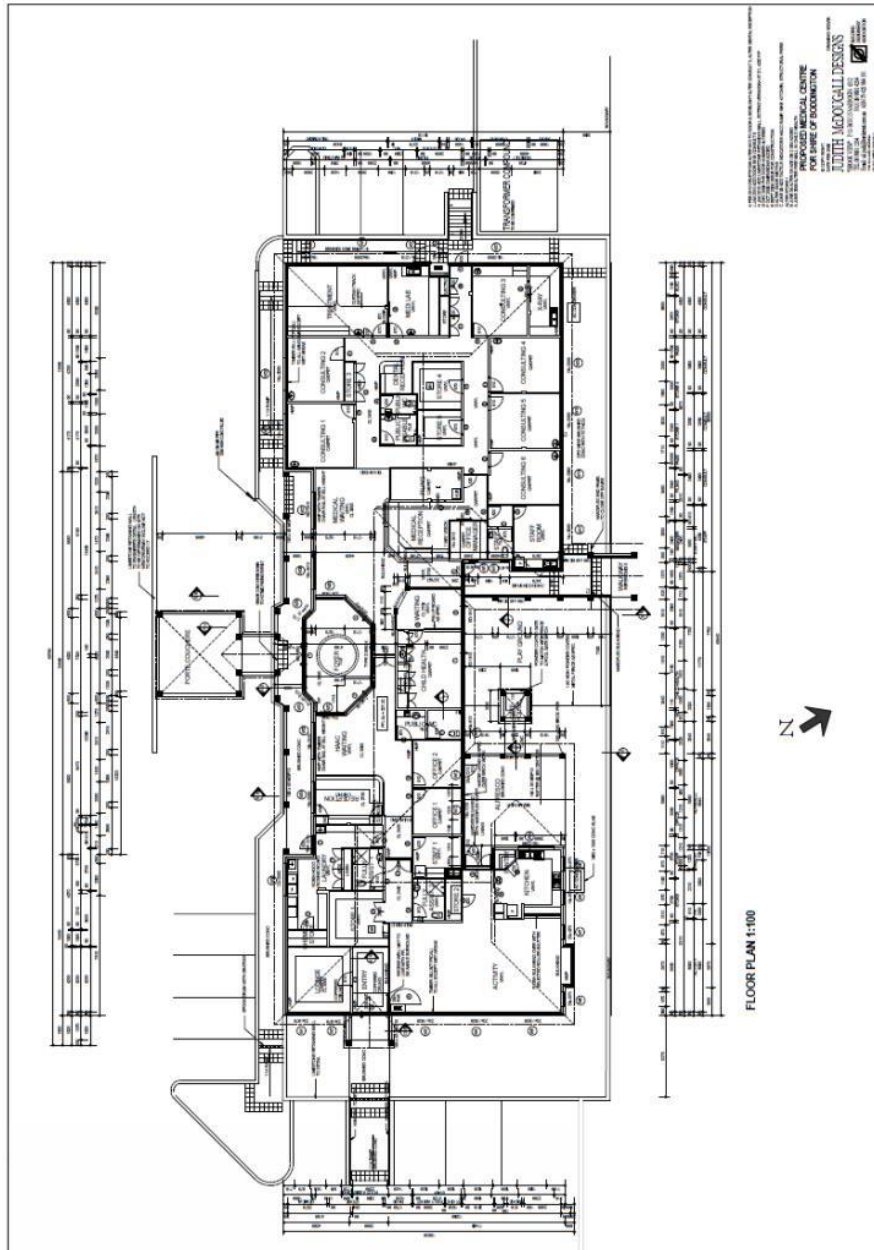
Signed on behalf of WA Country Health
Service Wheatbelt:

SIGNATURE OF REGIONAL DIRECTOR

DATE

NAME OF REGIONAL DIRECTOR

ANNEXURE 2
(Floor Plan)



Attachment 8.5.3A

ANNEXURE 3

(Shire's Plant and Equipment)

1. Waiting room chairs (45)
2. Waiting room table
3. Artwork (foyer)
4. Refrigerator (staff room)
5. Microwave oven (staff room)
6. Table (staff room)
7. Chairs (6) (staff room)
8. Flat screen television (37 inch)
9. Flat screen television (26 inch)
10. Nuvoe Parkway seats (2)
11. Chair (Room 4)
12. Visitor's chairs (2 – Room 4)
13. Telephone system
14. Reception Chair
15. Storage cupboard (Room 4)

Attachment 8.5.3A

ANNEXURE 4

(Contributor's Plant and Equipment)

1. Height adjustable treatment bed
2. Ultrasound machine
3. Physiotherapy treatment plinth
4. Computer

8.6 CHIEF EXECUTIVE OFFICER:

8.6.1 Action Sheet

Disclosure of Interest: Nil
Date: 15/02/2017
Author: Chris Littlemore

Purpose of Report

To bring forward Councillors information the Action Report with actions taken on previous Council resolutions.

Meeting Date	Resolution Number	Responsible Officer	Subject	Date Completed	Comments Current Status
17/01/2017	10/17	Chris Littlemore	Request for Haul Road Crossing – Lower Hotham Road	15/02/2017	Completed

For information only.

8.6.2 Change to Council Meeting Schedule

File Ref. No: ADM 0096
Disclosure of Interest: Nil
Date: 14 February 2017
Author: C Littlemore

Summary

Council is to consider a change to the date for the March Ordinary Meeting of Council.

Background

It is a legislative requirement for the public in general to be advised in advance of all meeting dates, place and starting times to facilitate attendance or participation in Council Meetings. Unforeseen circumstances may dictate a change to this schedule and local advertising will inform Electors accordingly.

Comment

Cr Allert has advised of a request for leave of absence for the March Meeting of Council.

If Council was to approve a change to the meeting date to 14 March 2017, no leave of absence would be required.

Statutory Environment

Local Government (Administration) Regulations 1996

12. Public notice of council or committee meetings — s. 5.25(1)(g)
- (1) At least once each year a local government is to give local public notice of the dates on which and the time and place at which —
- (a) the ordinary council meetings; and
 - (b) the committee meetings that are required under the Act to be open to members of the public or that are proposed to be open to members of the public, are to be held in the next 12 months.
- (2) A local government is to give local public notice of any change to the date, time or place of a meeting referred to in subregulation (1).

Consultation – Nil

Policy Implications – Nil

Financial Implications

Local advertising can be carried out at "nil" cost to Council

Economic Implications - Nil

Social Implications - Nil

Environmental Considerations - Nil

Strategic Implications - Nil

Options

Council can resolve to:

1. adopt the recommendation/s;
2. adopt the recommendation/s with further amendments; or
3. not accept the recommendation/s, giving reasons.

Voting Requirement - Simple Majority

OFFICER'S RECOMMENDATION – ITEM 8.6.2

COUNCIL RESOLUTION

26/17

Moved: Cr Smart

That Council resolve to hold the March 2017 Ordinary Meeting of Council on 14 March 2017 and give local public notice of the change.

Seconded:

Cr Collins

Carried: 5/1

8.6.3 Development Assessment Panel Nominations

File Ref. No: ADM 0039
Disclosure of Interest: Nil
Date: 12 May 2017
Author: Chris Littlemore CEO

Summary

Council is to consider selecting Councillors to be recommended to the Minister for Planning to be appointed as members and alternate members of the Development Assessment Panel to decide on very large development applications in the Shire of Boddington.

Background

The DAPs are made up of two types of members, specialist and local government members. The DAP regulations require that specialist members hold particular qualifications in the fields listed in the next section of this document. Local government members are members of a local government council who are nominated by that local government to sit on a DAP.

All DAP members will be paid sitting fees.

In addition, the DAP regulations provide for reimbursement of DAP members' motor vehicle and travel costs.

DAP meetings will be open to the public and submitters may be given the opportunity to present their case to the DAP directly, if they wish, before a decision is made on the application.

Comment

Under DAP regulation 26, the Minister for Planning, has invited the Shire of Boddington to nominate four elected members of Council, comprising two local members and two alternate local members to sit on the Peel DAP as required for the next two year period.

All appointed local members will be placed on the local government member register and advised of DAP training dates and times. It is mandatory for all DAP members to attend training before they sit on a DAP. Priority training will be provided to high application volume DAPs.

Strategic Implications

It is not anticipated that many development applications submitted to the Shire of Boddington will reach the levels required to be referred for a decision by the DAP. However all of those applications will be size to be significantly important to the Shire.

Policy Implications - Nil

Financial Implications Nil

Economic Implications – Nil

Social Implications - Nil

Environmental Considerations - Nil
Consultation - Nil

Options

Council can:

1. resolve the Officer's Recommendation with the names of Councillors included;
2. resolve to select as many Councillors as nominate to be recommend to the Minister for Planning as DAP Members and alternate DAP Members;
3. resolve to not select any Councillors to be nominated to the Minister and allow the Minister to select other local electors to be DAP Members and alternate DAP Members.

Voting Requirements - Simple Majority

OFFICER'S RECOMMENDATION – ITEM 8.6.3

COUNCIL RESOLUTION

27/17

Moved: Cr Crilly

That Council nominate:

1. Councillor Crilly and Councillor Hoek to the Minister for Planning as Development Assessment Panel members; and
2. Councillor Smart and Councillor Allert to the Minister for Planning as alternate Development Assessment Panel members.

Seconded:

Cr Glynn

Carried: 6/0

9. ELECTED MEMBERS' MOTION OF WHICH PREVIOUS MOTION HAS BEEN GIVEN:

9.1 Notice of Motion

That council instruct the CEO to seek quotes to reroof the old police station with a view to extending the life of this historical building for future use.

Background

The old police station in the middle of the caravan park is starting to deteriorate because of the lack of use and maintenance on the property. Some years back it was used by Playgroup until Worsley gave them a property in Hakea Road to use. Since then it has sat idle and work is required to keep it maintained to a suitable standard so it does not deteriorate further and until such time it is to be utilised. The previous Caravan Park caretakers expressed an interest in using it as overnight accommodation.

Many significant buildings have been lost to the community of Boddington over the years. It is acknowledged that maintaining links to the history of a region through architecture provides a cultural link to the past which supports local communities.

Officer Comment

In relation to the old police station, Councillor Allert requested at the October 2016 Councillor Information Session that a report be brought forward to the November Information Session. An extract of the report is as follows:

"A quote has been obtained for the asbestos removal. While there, the contractor looked at the roof. It has a minor leak which will be repaired. The building is quite sound and not suffering demolition by neglect."

An inspection, subsequently undertaken since the flooding rainfall of 10 February, 2017, revealed no internal leaking.

COUNCIL RESOLUTION /17 Moved: Cr Collins

That council instruct the CEO to seek quotes to reroof the old police station with a view to extending the life of this historical building for future use.

Seconded: Cr Crilly Carried:

The Mover and Seconder agreed to withdraw the original motion.

COUNCIL RESOLUTION 28/17 Moved: Cr Hoek

Alternate Motion

That the CEO develop a Scope of Works for the Old Police Station and bring that forward to the next Councillor Information session.

Seconded: Cr Collins Carried: 6/0

Minutes of the Ordinary Meeting of the Shire of Boddington to be held on
Tuesday 21 February 2017

10. URGENT BUSINESS WITHOUT NOTICE WITH THE APPROVAL OF THE PRESIDENT OR MEETING:

Nil.

The Public were asked to leave at 5:52pm.

COUNCIL RESOLUTION

29/17

Moved: Cr Crilly

That Council go behind closed doors. In accordance of section 5.23 (2) (c) as Council is about to discuss a contract to be entered into that the meeting be closed to members of the public for Item 11.1.1 and pursuant to S5.23 (2) (a) as Council is about to discuss a matter affecting an employee that the meeting remain closed to members of the public for Item 11.1.2.

Seconder:

Cr Smart

Carried: 6/0

11. CONFIDENTIAL ITEMS:

11.1.1	Boddington Age Appropriate Accommodation– Tender RFT 03/2016-17
--------	---

11.1.2	Purchase of Land
--------	------------------

12. CLOSURE OF MEETING:

Cr Allert declared the meeting closed at 6:37pm.