



Boddington Visitor Centre

Interpretation Plan | Interior Design Development

Issued 10 August 2016

CREATIVE SPACES

Suite 1/46 Angove St
North Perth WA 6006
08 9227 9396
creativespaces.com.au

PROJECT OVERVIEW

Creative Spaces have been engaged by the Shire of Boddington to develop a design for an interpretive display within the proposed Visitor Centre. Below are some key points from the brief provided by the Shire:

- This space is to be experienced without guidance with staff.
- The interpretation area should be autonomous with minimal requirements for opening/closing.
- The space should be multifaceted and interactive where possible, with assorted media from print work, posters, artwork, sounds, digital media and objects.
- The content should link to other sites around town including walk trails, heritage nodes that are to be included in the Main Street Vision for Boddington.

This document includes the following to address the brief and scope of works:

Schematic Design Inspiration + Concept	3
Schematic Design Sketch Plan	4
Interpretation Space - Plan	5
Interpretation Space - Plan Details	6
Furniture + Finishes	7
Round Showcases Details	8
Interactive Bench-top Details	9
Interactive Bench-top Details	10
Interior Elevations	11
Interior Renders	12
Provisional Costs and Optional Elements	13
Fit-out recommendations	14

SCHEMATIC DESIGN
INSPIRATION + CONCEPT



Benches with digital and print media, draws and open spaces underneath for interactive elements.



Interactive: Touch and feel (local resources)



Interactive: Round showcases



Digital: App or website with base layer of information with ability to direct to other local locations.

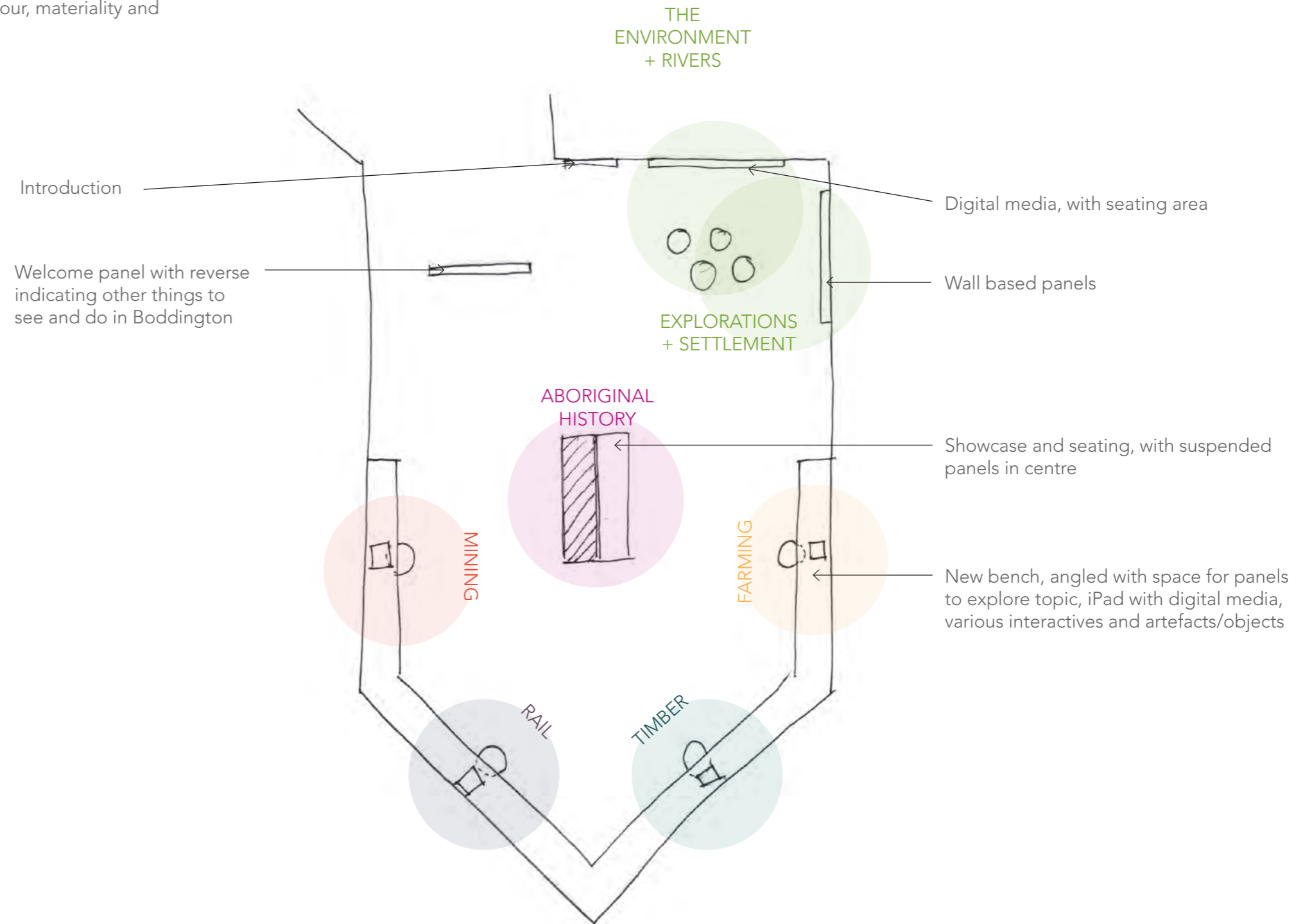
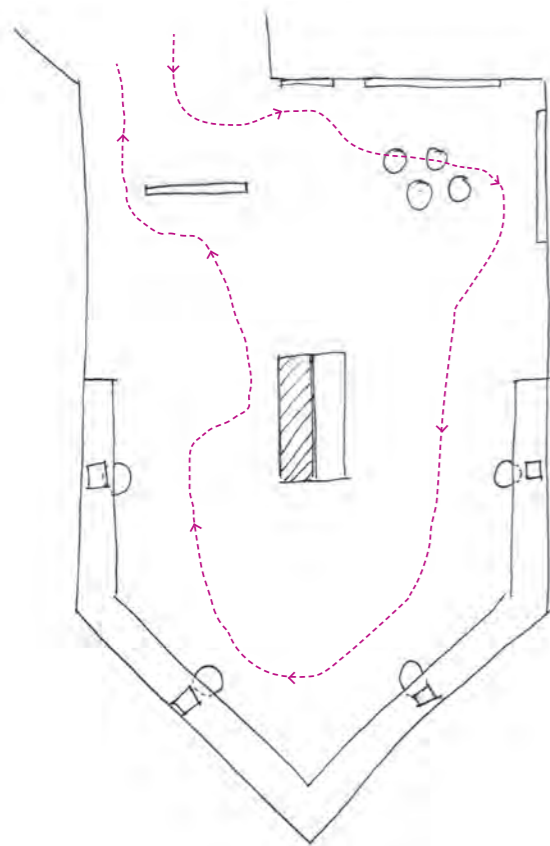


Interactive: Pull out panels

SCHEMATIC DESIGN ONE
INSPIRATION + CONCEPT

Spatial planning inspired by building form and existing layout. This concept focuses on bench-top interactives and media allowing the space to be open, flexible and adaptive to future change.

The stories and sub-themes are explored in nodes around the space, this separation allows for the flexibility to add to the media over time. These would then be linked via graphic and interior elements such as colour, materiality and light to create a relationship with the overall theme.

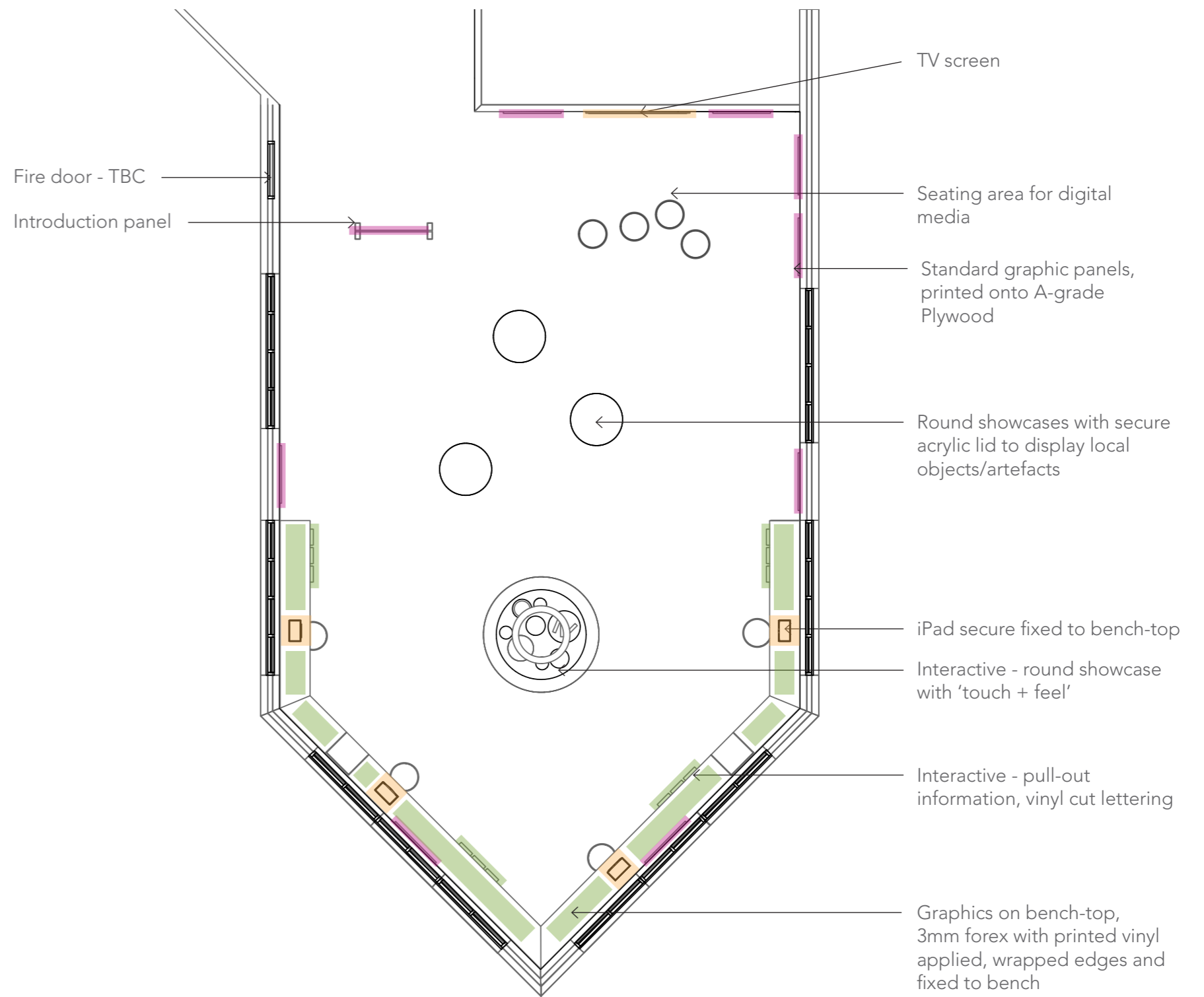


INTERPRETATION SPACE
CONTENT PLAN

Spatial planning was further developed based on the previous concept informed by continued research, development of content and understanding of the building.

The plan and the below table demonstrate the various opportunities for interpretation.

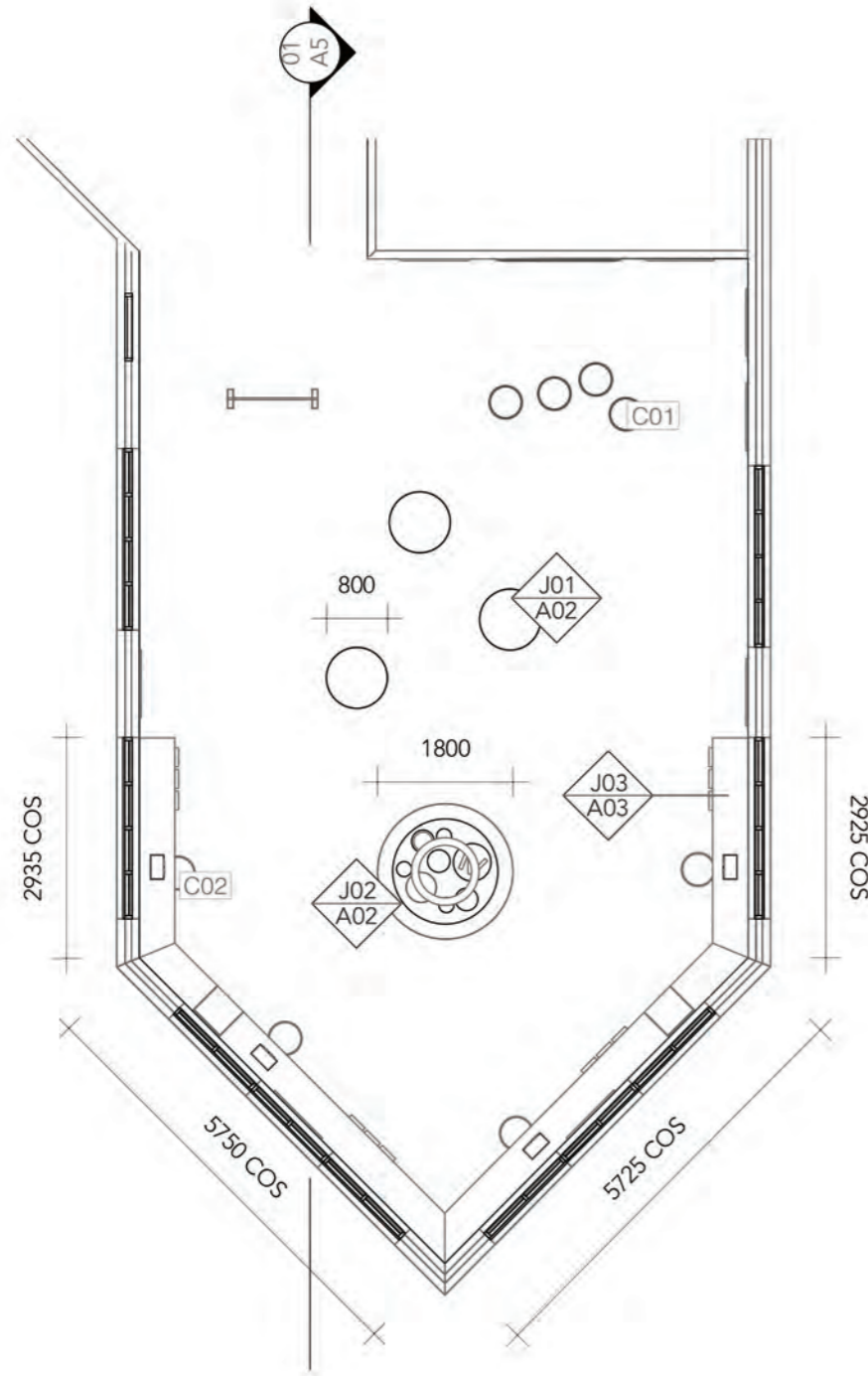
Type	Details	Size	Quantity
Wall based graphic opportunities	Standard graphic panel	1200mm(H) x 900mm(W)	8
	Introduction panel	2100mm(H) x 1200mm(W)	1
Other graphic opportunities	Bench-top	450mm(H) x approx. 10m(L)	N/A
	Pull-out panel	250mm(W) x 300mm(L)	12
Digital media opportunities	iPad / Tablet	budget dependent	4
	TV / Monitor	budget dependent	1



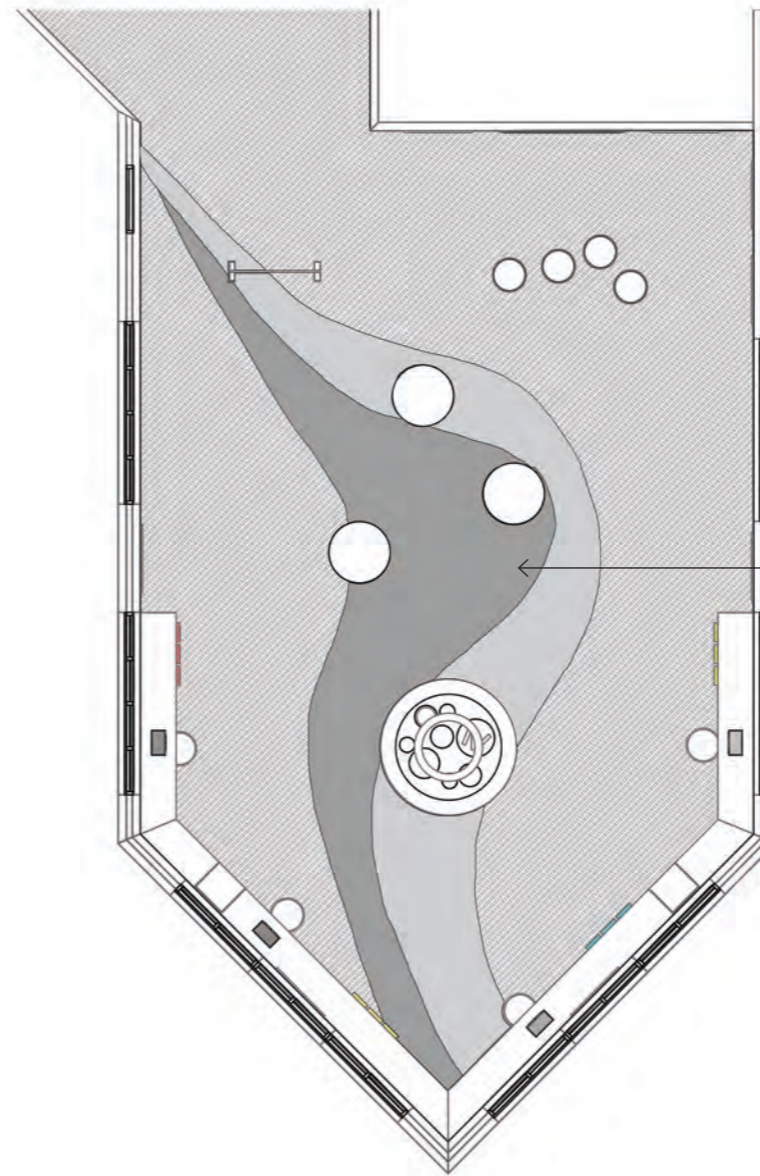
INTERPRETATION CENTRE PLAN

NOT TO SCALE

INTERPRETATION SPACE
DETAIL PLANS



01 FURNITURE PLAN
Scale 1:100

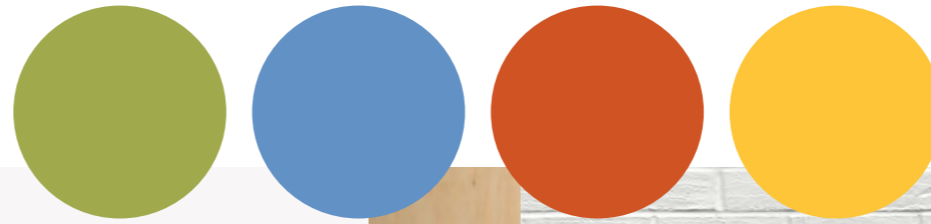


Feature floor pattern representing the local river wrapping around Boddington, see interior renders for colour application

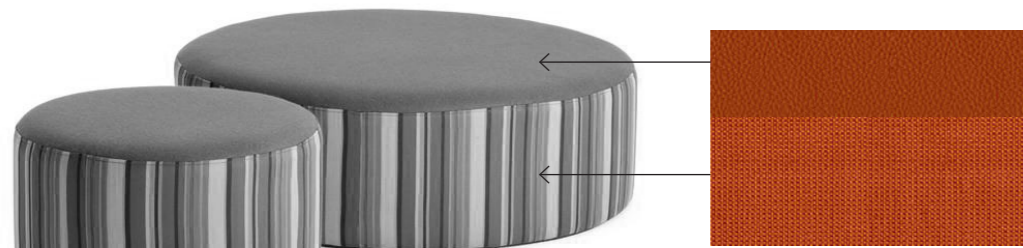
02 FLOOR FINISHES PLAN
Scale 1:100

FURNITURE + FINISHES
INTERIOR PALETTE

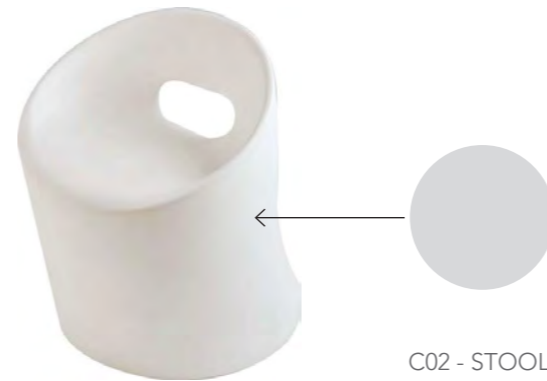
The palette for the interpretation space has been developed with a neutral grey and white base to suit the building with pops of bright colours. These tones have been inspired by the local environment, the lush green of the bush, blue to signify the rivers, burnt orange of the soil and the local gold industry in yellow. These colours are indicative and will vary appropriate to the graphic treatments in the second stage.



- INTERIOR PALETTE (Left to Right)
- FEATURE FLOOR FINISH - VINYL
Forbo Eternal Smaragd Pistaccio
- FEATURE FLOOR FINISH - VINYL
Forbo Eternal Smaragd Blue
- PRIMARY FLOOR FINISH - VINYL
Forbo Eternal Smaragd Grey
- CHAIR UPHOLSTERY
Instyle Source Vitality + Zone Arid
- LAMINATE
Laminex White
- PLYWOOD
Designer Ply Hoop Pine
- PAINT FINISH TO BRICK
Dulux

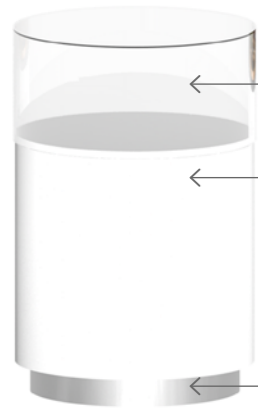


C01 - OTTOMAN
UCI Disco 400mm diameter
Upholstered

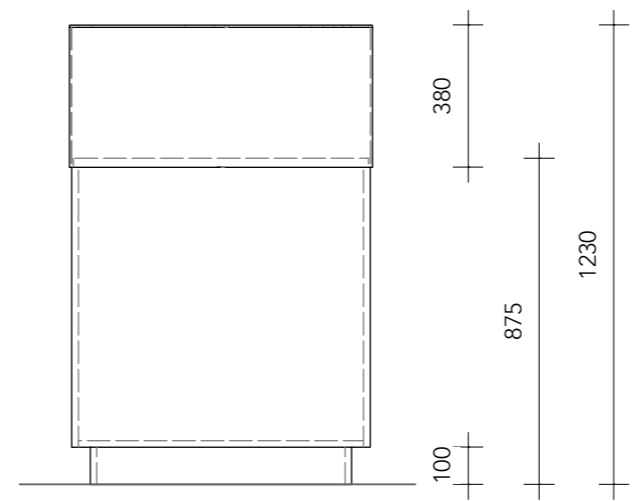
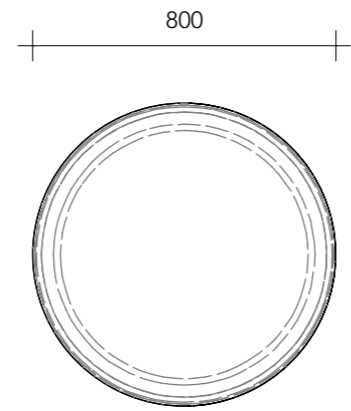


C02 - STOOL
UCI Bop stool for under bench-top
Polyethylene in cool grey

ROUND SHOWCASES
DETAILS



← acrylic top with lock to secure items inside showcase
← laminate finish to round showcase base
← aluminium kicker
option: remove kicker and replace with castors/wheels



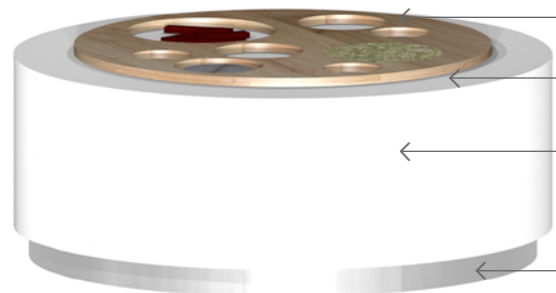
01 ROUND SHOWCASE RENDER
NTS

02 ROUND SHOWCASE PLAN
Scale 1:20

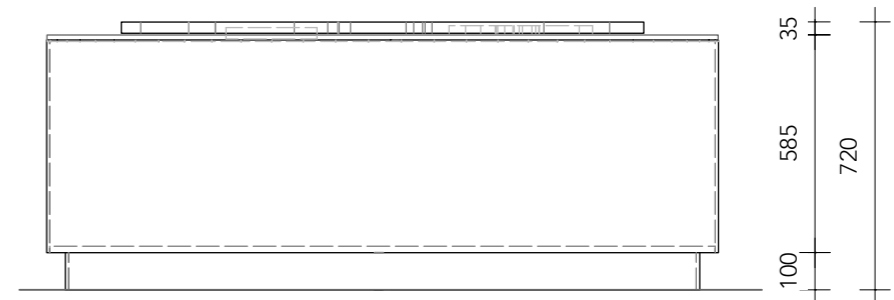
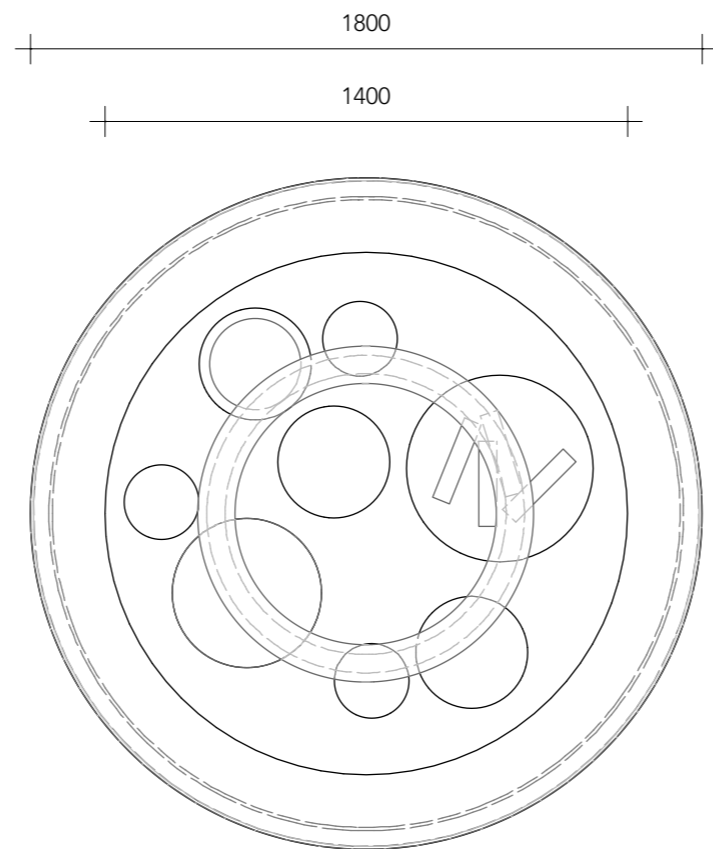
03 ROUND SHOWCASE ELEVATION
Scale 1:20



← round feature pendant suspended above showcase, represents red soil clouds



← plywood top with cut outs for 'touch + feel' interactives
← graphics around edge
← laminate finish to round showcase base
← aluminium kicker
option: remove kicker and replace with castors/wheels



04 INTERACTIVE SHOWCASE RENDER
NTS

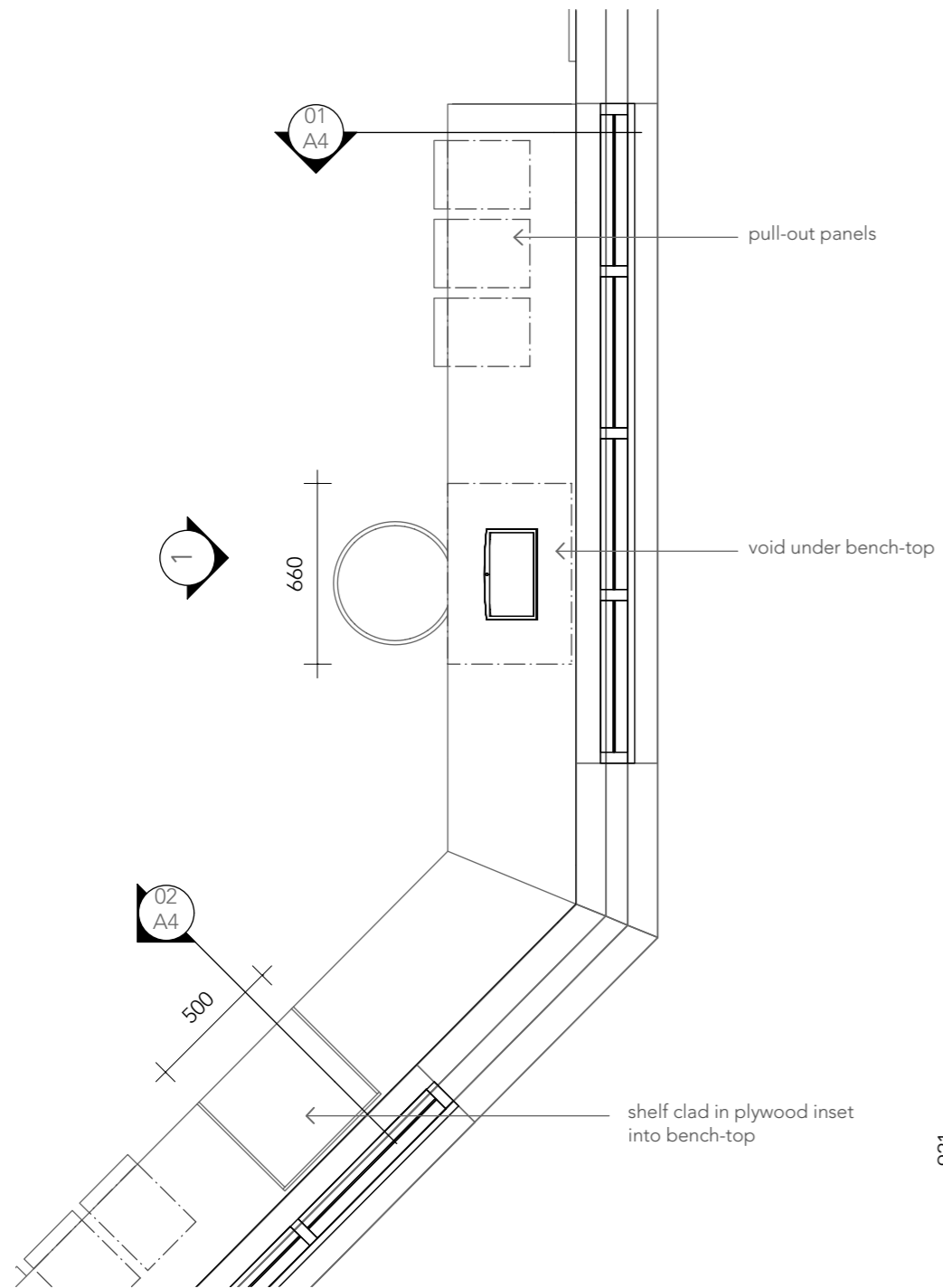
05 INTERACTIVE SHOWCASE PLAN
Scale 1:20

06 INTERACTIVE SHOWCASE ELEVATION
Scale 1:20

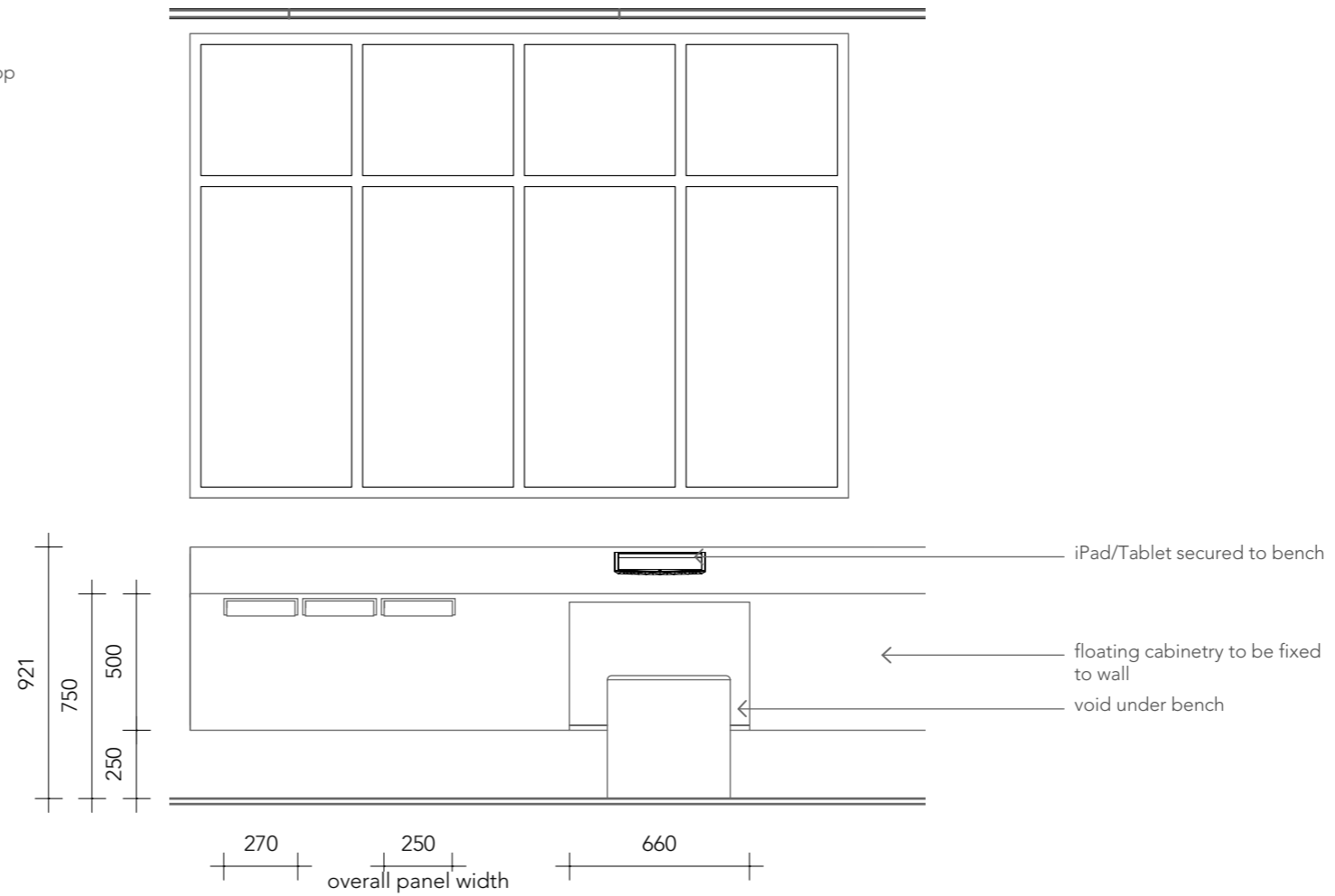
INTERACTIVE BENCH-TOP
DETAILS



02 BENCH-TOP RENDER
NTS

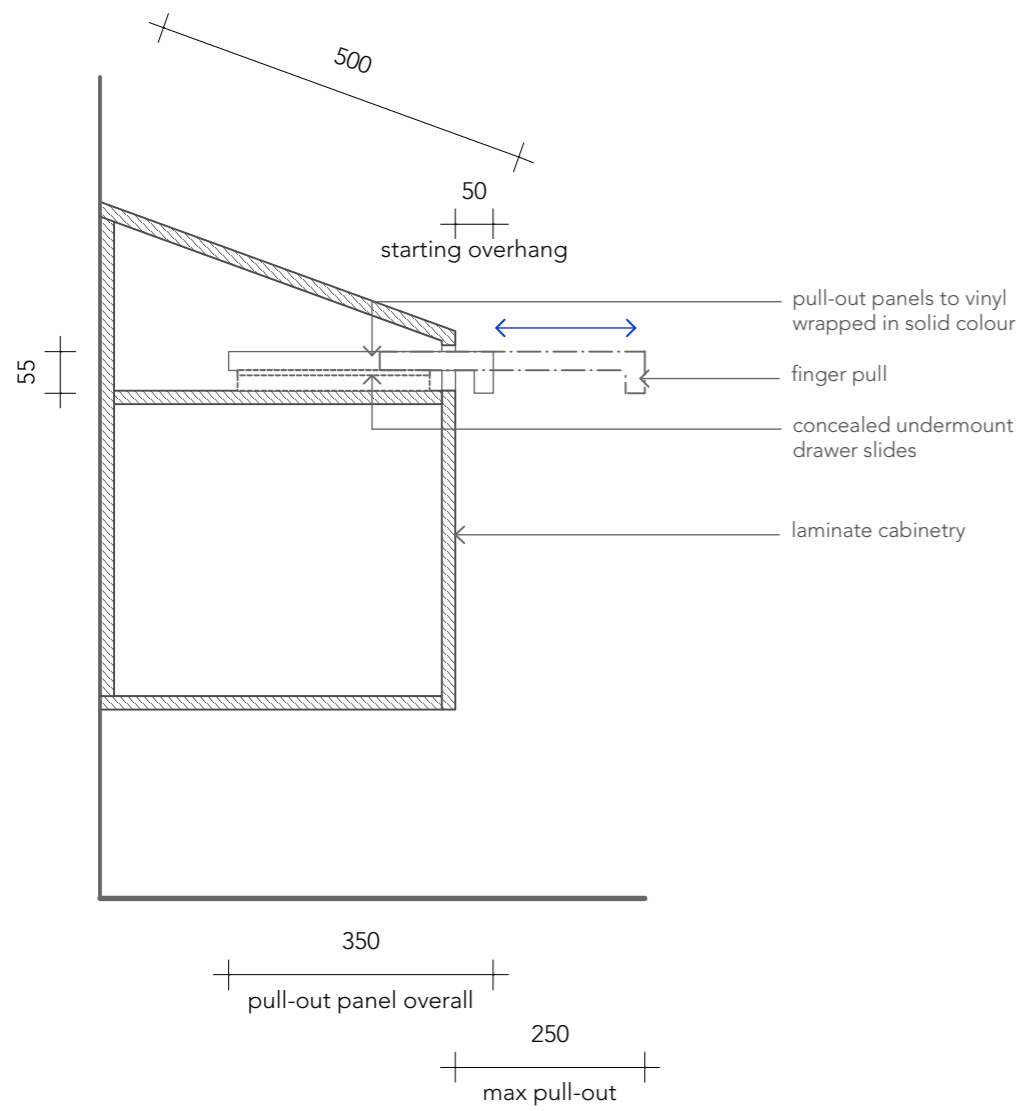


01 BENCH-TOP PART PLAN
Scale 1:25

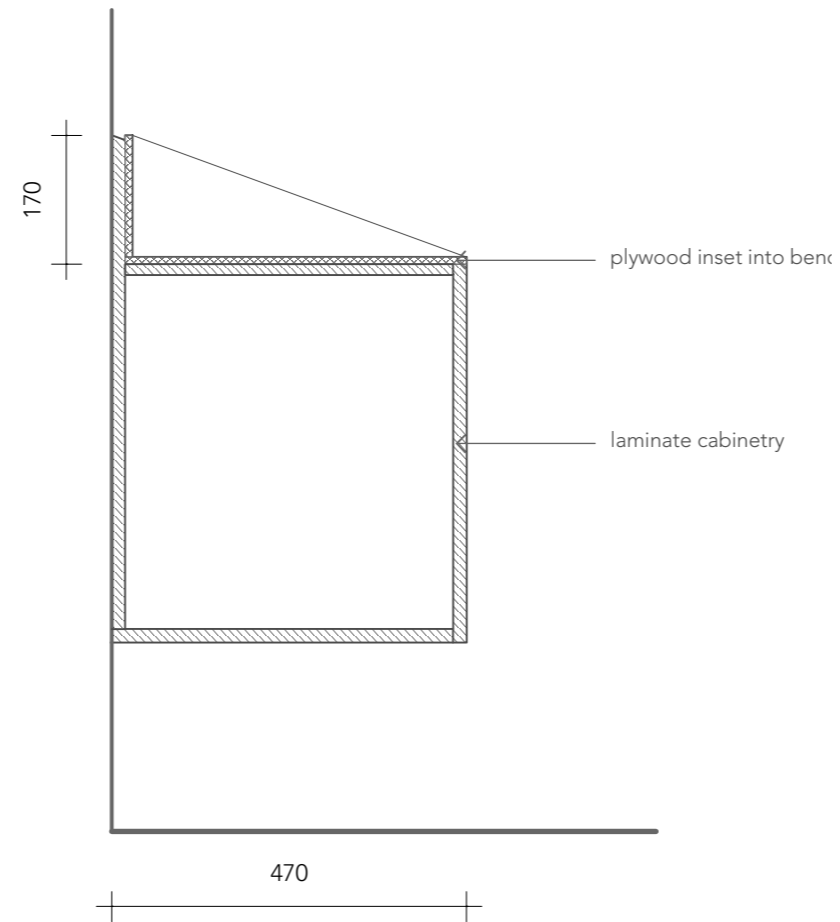


03 BENCH-TOP ELEVATION
Scale 1:25

INTERACTIVE BENCH-TOP
DETAILS

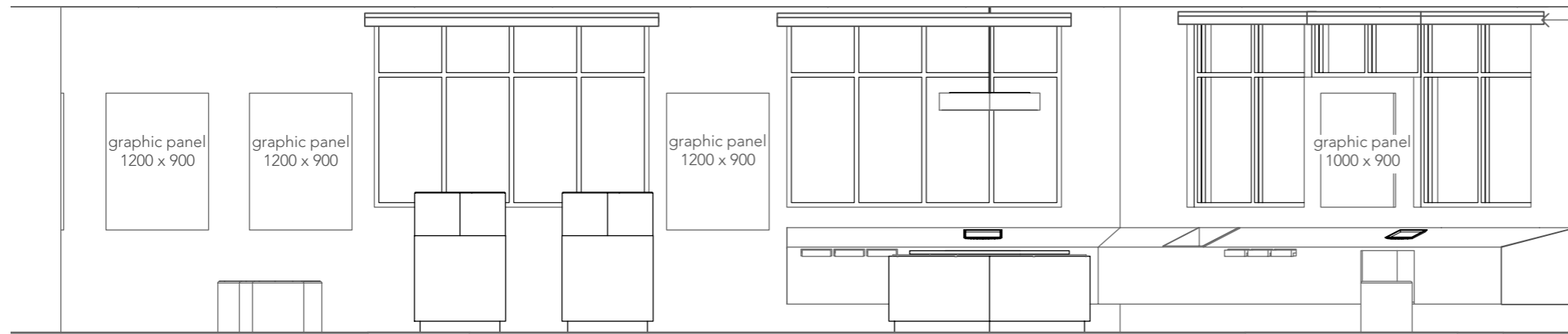


O1 BENCH-TOP SECTION
Scale 1:10



O2 BENCH-TOP SECTION
Scale 1:10

INTERIOR ELEVATION



double roller blind
1 - semi-transparent to reduce glare
2 - block-out for security at night

01 ROOM ELEVATION
Scale 1:50



INTERIOR RENDERS



PROVISIONAL COSTS

Boddington Interpretation Budget - PROVISIONAL COSTS - 10 August 2016

Item	Qty	Supplier's Cost (ex gst)	Supplier	Notes
Lighting				
LED track	1	\$129.31	Lightwerk	Supply only
LED spotlights	4	\$856.88	Lightwerk	Supply only
LED pendant	1	\$2,181.28	Lightwerk	Supply only
LED panels	10	\$7,387.90	Lightwerk	OPTIONAL, Supply only
Lighting Sub-total (ex gst)		\$10,555.37		
Furniture				
Bop Stool	4	\$240.00	UCI	Supply only
Disco Ottoman	5	\$1,250.00	UCI	Supply only
Furniture Sub-total (ex gst)		\$1,490.00		
Cabinetry				
Small round showcases	3	\$13,800.00	UCI	
Interactive showcase	1	\$6,625.00	UCI	
17.5L/metres wall mounted	1	\$18,600.00	UCI	
Delivery + installation	-	\$7,200.00	UCI	
Cabinetry Sub-total (ex gst)		\$46,225.00		
Flooring				
Forbo Eternal	100m ²	\$6,500.00	Forbo	Recommended standard install \$55pm ² , does not include current floor removal, preparation of floor or pattern. \$65pm ² for with pattern?
Flooring Sub-total (ex gst)		\$6,500.00		
Exhibition items				
Printed pine graphic panels	9	\$2,400.00	Factory	Supply only
Pull-out drawers graphics	12	\$90.00	Imagesource	Supply only, vinyl cut lettering
Bench-top graphics	12	\$410.00	Imagesource	Supply only, colour printed vinyl edges wrapped on 3mm forex
iPad	4	\$2,156.40	Apple	iPad 2 Air
iPad secure case	4	\$936.00	Sprocket	Supply only
TV		\$9,384.00	3 Monkeys AV	Supply and install
Supply/sourcing of 'touch' components		\$500.00	Misc	Indicative only
Development of multi-media content for iPads and TV		\$10,000.00	TBC	Indicative only and will depend upon method chosen
Miscellaneous fixings, tapes etc.		\$1,000.00	CS	
Exhibition items Sub-total (ex gst)		\$26,876.40		
Overall Sub-total (ex gst)		\$91,646.77		
Other				
Project management of fabrication and installation		\$9,164.68	CS	Includes supervision of a 2 day install.
Contingency 10% of furniture and fittings		\$9,164.68	CS	Trades, install
Grand Total (ex gst)		\$109,976.12		
All financial and contractual agreements are between the client and any nominated supplier/contractor. To this end all defects, which require rectification due to a defects liability period, will need to be negotiated and followed up by the client. Should the Shire wish Creative Spaces to contract the suppliers then an additional 10% will be added to the costs above.				

OPTIONAL ELEMENTS

There are some interior elements which, depending on budget restraints, could be altered or removed to suit.

- Feature colours in floor could be removed and the single colour grey applied across the floor.
- Pendant above touch and feel showcase could be replaced by track lighting.
- Replace existing fluorescent lights with recessed LED lights at similar size. See below example of existing and new.



GENERAL RECOMMENDATIONS

The below recommendations should form part of the overall building works to ensure the interior finishes and building remedial works are appropriate for the implementation of the interpretation fit-out.

Creative Spaces can consult with the Architect on these general recommendations for the interior of the interpretation space if required.



Remove ceiling fans, these may interfere with hanging items and other exhibition elements

Replace all damaged ceiling tiles

Window treatments to assist with glare and light reduction, CS to collaborate with Architect to create most effective solution

Remove all existing wall based items (pinboards, open shelves) and make good any damage to walls

Removal of benches

Walls to be made good, and painted as specified

Timber skirting to be made good and painted to match walls

Remove all of the existing floor vinyl and replace with specified

Thank you

We look forward to hearing your feedback

